

Hepburn

SHIRE COUNCIL



Transfer Station

Guidelines

2021/2022



ACKNOWLEDGEMENT OF COUNTRY

Hepburn Shire Council acknowledges the Dja Dja Wurrung as the Traditional Owners of the lands and waters on which we live and work. On these lands, Djaara have performed age-old ceremonies of celebration, initiation and renewal. We recognise their resilience through dispossession and it is a testament to their continuing culture and tradition, which is strong and thriving.

We also acknowledge the neighbouring Traditional Owners, the Wurundjeri to our South East and the Wadawurrung to our South West and pay our respect to all Aboriginal peoples, their culture, and lore. We acknowledge their living culture and the unique role they play in the life of this region.



Purpose

These guidelines have been developed to outline the services available at our transfer stations and to encourage people to use those services to minimise waste going to landfill.

This includes being able to salvage from the self-serve areas and recover items from the tip shop at our transfer stations by following these guidelines.

These guidelines have been developed by a community reference group in consultation with Council and endorsed by Council.

Our Waste: Our Challenge: Our World



Introduction

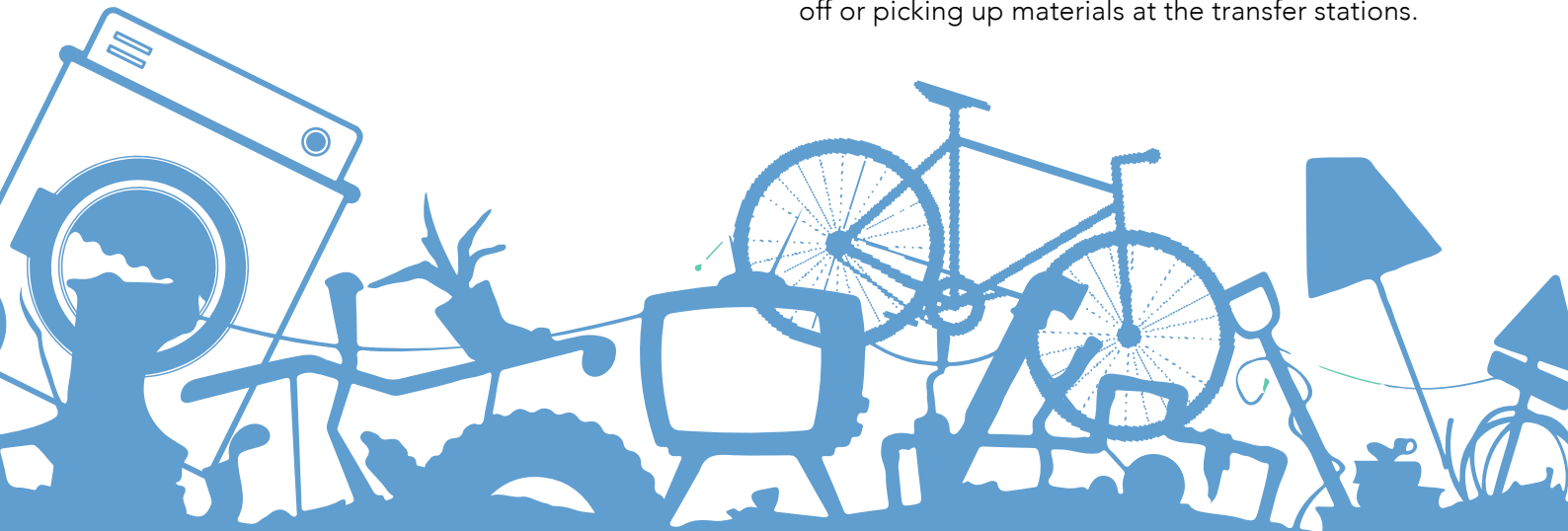
We are committed to helping people rescue, reuse, repurpose, repair and recycle goods and materials wherever possible to reduce waste going to landfill.

There are so many good reasons to do this including:

- reducing the amount of energy and finite resources needed to make new things, which helps combat climate change;
- saving space in landfill which is running out;
- protecting the local environment and wildlife; and
- saving money – both at the transfer station gate and when purchasing second-hand items.

We want to work with the community to help people shift from the 'take, make and dispose' approach where you use a product and then dispose of it, to a more circular approach where materials and resources go around and around in use for as long as possible. This is often referred to as the circular economy.

Our transfer stations play an important role in this shift. Our goal is to encourage and make it easy for people to prioritise the 5 R's - rescue, repair, reuse, repurpose and recycle – whether dropping off or picking up materials at the transfer stations.



Our transfer stations

Hepburn Shire Council has 3 transfer stations:

- Daylesford - Ajax Road, Daylesford
- Creswick - Ring Road, Creswick
- Trentham - Cosmo Road, Trentham

	DAYLESFORD	CRESWICK	TRENTHAM
Locations:	Ajax Rd, Daylesford	Ring Rd, Creswick	Cosmo Rd, Trentham
Monday	9am - 5pm	12pm - 5pm	Closed
Tuesday	9am - 5pm	Closed	Closed
Wednesday	Closed	Closed	12pm - 5pm
Thursday	9am - 5pm	12pm - 5pm	Closed
Friday	9am - 5pm	12pm - 5pm	Closed
Saturday	9am - 5pm	9am - 5pm	9am - 5pm
Sunday	9am - 5pm	9am - 5pm	9am - 5pm

Using our transfer stations



Sort

Before you leave home

- Organise and stack your load so you have salvageable/ tip shop/ recyclable materials on top and general waste on the bottom. This will help you to drop things off easier and faster into the designated areas and will save you money if staff can easily see the free items.
- The more that can be salvaged, re-used or recycled the less you have to pay! Visit our website at www.hepburn.vic.gov.au to see the full list of materials that can be dropped off for free to be rescued/ salvaged, repurposed, reused or recycled.

Stop

When you arrive

When you arrive at the transfer station stop at the boom gate or staffed area. Staff will assess your load and determine how much you will need to pay for dropping off materials. Once you have paid, staff will then give you instructions on where to go to drop off your various items and how to do this safely.



What you can drop off

The below table is a guide as information may change. Make sure you check the website for a comprehensive and up to date list of materials and charges. Visit www.hepburn.vic.gov.au



FREE items – for tip shop, salvaging and recycling



Furniture (must be clean and usable)



Household items (crocery, cutlery, small appliances, artwork etc)



Building materials (timber, corrugated iron, windows, bricks, tiles, doors, steel etc)



Fencing (star posts, chicken wire)



Plumbing (baths, sinks, taps, laundry items, pipes etc)



Bikes and exercise equipment



Garden equipment (pots, garden edging, gardening equipment and machinery)



E-Waste (computer, laptops, phones, TVs, printers, electrical cords)



Separate recyclable cardboard and paper



Car bodies



Recyclable empty paint containers



Oil



Batteries



Timber for firewood

\$ Items that have a fee

- \$ Clean green waste (no noxious weeds)
- \$ Mattresses and soft furnishings in poor condition
- \$ Comingled or non-separated recyclables
- \$ Car tyres
- \$ Paint
- \$ Refrigerators and freezers (degassed / gassed)

X Items that are not accepted

- X Commercial industrial waste (concrete, building site rubble, some plastics etc)
- X Asbestos
- X Noxious weeds
(for a list of noxious weeds see the appendix or visit our website - www.hepburn.vic.gov.au)

You MUST NOT bring any asbestos contaminated materials to the transfer station (this may include old linoleum, vinyl tiles, electrical fittings and any cement sheeting).

Please contact the Environment Protection Authority for more information about how to dispose of asbestos contaminated material – visit the EPA website at: www.epa.vic.gov.au/for-community/environmental-information/waste/about-asbestos/find-an-asbestos-landfill

Currently the closest place to drop off asbestos is in Campbells Creek, Sluicers Road. For more information phone 5470 5348.

Salvage

Before going out and buying something new, why not think about picking up second hand or pre-loved goods from our transfer stations. We have two distinct areas where you can salvage: the self-serve area and the Tip Shop.

SELF-SERVE SALVAGING AREA

In each of our transfer stations you can salvage from designated self-serve areas. These areas are sign posted and the cost of materials priced.

Salvageable items can include:

- Building materials (timber, corrugated iron, windows, bricks, tiles, doors, steel etc)

- Fencing (star posts, chicken wire)
- Plumbing (baths, sinks, taps, laundry items, pipes etc)
- Bikes and exercise equipment
- Garden equipment (pots, garden edging, gardening equipment and machinery)
- Paint
- Firewood (limited availability)

Make sure you check the website for the current list of salvageable items at each transfer station.

It is important to check this as the list may change from time to time depending on what is available.

Shop and Save

Tip Shops

Our Tip Shops are full of bargains! They contain a range of pre-loved items including furniture, household goods, artwork, books, music and much more. There is a Tip Shop at each of our transfer stations.

Firewood and mulch

At times firewood and mulch are available from the transfer stations.

Scrap pile

At each transfer station, there may be a main scrap pile of metal/steel materials that is yet to be sorted. To ensure everyone's safety, materials can only be removed from the scrap pile by Transfer Station staff and if safe to do so. Please ask a staff member if you are interested in something from the scrap pile.

Garage sale

From time to time when stock is building up, we will host a community garage sale. Look out for details on our website and social media pages or signs at the transfer stations.

Follow us on Hepburn Shire Council's Facebook page and find out what is new and in stock!

Keep up to date with all the new items coming into our Tip Shops and stock in our salvaging areas by following us @hepburncouncil. We post on Facebook and Instagram multiple times a week.

But you have to be quick, new items and stock gets snapped up quickly!

The safety and regulatory stuff

These guidelines have been written to support clause 4.7 of Hepburn Shire's Local Law No2, which states: ... A person must not search through or remove any articles of rubbish, recyclables or items:

- a) from a transfer station, unless in compliance with any Council signage displayed at the transfer station; or
- b) left for collection in a municipal place.
(A municipal place refers to any land owned or managed by Council).

While at the transfer station, you need to adhere to all signage and safety information and instructions. Anyone acting in an unsafe manner will be asked to leave the property.

Children must be supervised at all times while at the transfer station.

If you need help accessing materials or you feel that something is unsafe please ask/ alert a staff member.

More information

For more information visit hepburn.vic.gov.au or contact us via email at Shire@hepburn.vic.gov.au or by phone on (03) 5348 2306.

Appendix

Most common Noxious Weeds

The following Noxious weeds are widespread in parts of the Shire or adjoining areas.

A person must not transport or deposit weeds or their seeds.

Common Name	Scientific name
African Boxthorn	<i>Lycium ferocissimum</i>
Blackberry	<i>Rubus fruticosus</i> sp. agg.
Briar Rose	<i>Rosa rubiginosa</i>
Chilean Needle Grass	<i>Nassella neesiana</i>
English Broom	<i>Cytisus scoparius</i>
Flax-leaved Broom	<i>Cytisus linifolia</i>
Gorse	<i>Ulex europaeus</i>
Hawthorn	<i>Crataegus monogyna</i>
Hemlock	<i>Conium maculatum</i>
Horehound	<i>Marrubium vulgare</i>
Pampas Lily of the Valley	<i>Salpichroa origanifolia</i>
Prickly Pear (Opuntoid) Cactus	<i>Austrocylindropuntia, Cylindropuntia, Opuntia</i>
Serrated Tussock	<i>Nassella trichotoma</i>
Soursob	<i>Oxalis pes-caprae</i>
Spiny Broom	<i>Calicotome spinosa</i>
Spiny Rush	<i>Juncus acutus</i>
St John's Wort	<i>Hypericum perforatum</i>
Thistle species	<i>Carthamus, Cynara, Silybum, Cirsium, Carduus, Scolymus, Centaurea species</i>
Wild Garlic	<i>Allium vineale</i>
Wild Mignonette	<i>Reseda luteola</i>
Willows	<i>Salix spp.</i>

The full list of declared weeds can be found here;

<https://agriculture.vic.gov.au/biosecurity/protecting-victoria/legislation-policy-and-permits/consolidated-lists-of-declared-noxious-weeds-and-pest-animals>



PO Box 21 Daylesford 3460
P: 03 5348 2306
F: 03 5348 2911

shire@hepburn.vic.gov.au
www.hepburn.vic.gov.au
 www.facebook.com/hepburncouncil

COUNCIL OFFICES

DAYLESFORD

Corner Duke & Albert Streets,
Daylesford

CRESWICK

68 Albert Street,
Creswick

CLUNES

The Warehouse - Clunes
36 Fraser Street, Clunes

TRENTHAM

13 Albert Street,
Trentham