

# HEPBURN SIGNIFICANT TREE REGISTER

Nominations 2011

Statements of Significance  
Report with planning  
scheme amendment



Planit urban design and planning  
TreEcology aboriculturalist  
with Amanda Jean heritage consultant

Final Report

November 2015

**Hepburn Significant Tree Register – Nominations 2011**  
**Statements of Tree Significance 2015**

Status Final (Post Exhibition of Planning Scheme Amendment C54)

Date November 2015 (Draft June 2012: Revisions May 2014 and June 2015)

Author Sue Slaytor (TreEcology) David Robb (Planit)

Project Manager/Reviewer David Robb



GREEN DESIGN AND PLANNING  
PO Box 452 Castlemaine Victoria 3450  
Telephone 03 5470 5124 Mobile 0431 521 505  
Email [planit@netcom.net.au](mailto:planit@netcom.net.au)  
ABN 28 803 090 098

**TRE**ecology

Sue Slaytor  
0419 445 226  
PO Box 97, Castlemaine 3450  
[slaytor@bigpond.com](mailto:slaytor@bigpond.com)



## **CONTENTS**

1.	INTRODUCTION	1
2.	SUMMARY OF RECOMMENDATIONS	4
3.	ASSESSMENT and SELECTION CRITERIA	9
4.	INDEX OF NOMINATED TREES	13
5.	STATEMENTS OF SIGNIFICANCE	18

## **ATTACHMENTS**

A	PROPOSED PLANNING SCHEME AMENDMENT C54
i	Explanatory Report
ii	Planning Scheme Amendment Maps : VPO 1 & 2; HO
iii	Heritage Overlay Planning Scheme Maps
iv	Instruction Sheet

## 1. INTRODUCTION

The Hepburn Significant Tree Register (STR) is a means to record and use information to conserve and manage significant trees in the municipality. Trees on the STR may possess values relating to visual, historic, botanical, cultural, commemorative or other significance.

The purpose and value of the STR is explained on Council's website as follows:

" Identifying and collecting data on significant trees on private and public land, is vital for long term tree protection. Significant trees or groups of trees include indigenous and introduced species showing outstanding characteristics such as size, shape and history that set them apart from surrounding trees. Nominating a tree to the Register will assist in identifying the location and number of significant trees and will aid Planning Scheme decision making."

Council called for nominations for the STR. A total of 70 nominations were received including trees from across the municipality located on private properties, within road reserves and in rural areas. Council appointed Planit and TreEcology to undertake survey and assessment of nominated trees, prepare statements of significance for nominated trees and prepare a planning scheme amendment to implement recommendation of the Statement of Significance Report.

A Statement of Significance describes the reasons for significance and may include identified problems or threats to the tree or trees. Each Statement of Significance includes recommendations for inclusion on the Hepburn STR and where appropriate, the application of a Vegetation Protection Overlay or Heritage Overlay to provide protection for the tree or group of trees. Guidelines for tree management are also included in the Statements of Significance.

### Study Process

#### Stage One

Hepburn Shire Council invited nominations for trees in the Shire to be included on the Hepburn Significant Tree Register. As part of the nomination process, Council required nominees to complete a nomination form detailing the botanical and common name, location, address, ownership and the reasons for the tree's significance. The reasons for significance followed the National Trust classification system with the following categories:

Horticultural – of outstanding genetic value and which could be important for future propagation

Context - in a historic garden, park or a local landmark

Rare – of few known species

Outstanding - being outstanding in size, height or circumference

Form – with unusual, abnormal or curious growth forms

Heritage – with specific historic or commemorative association

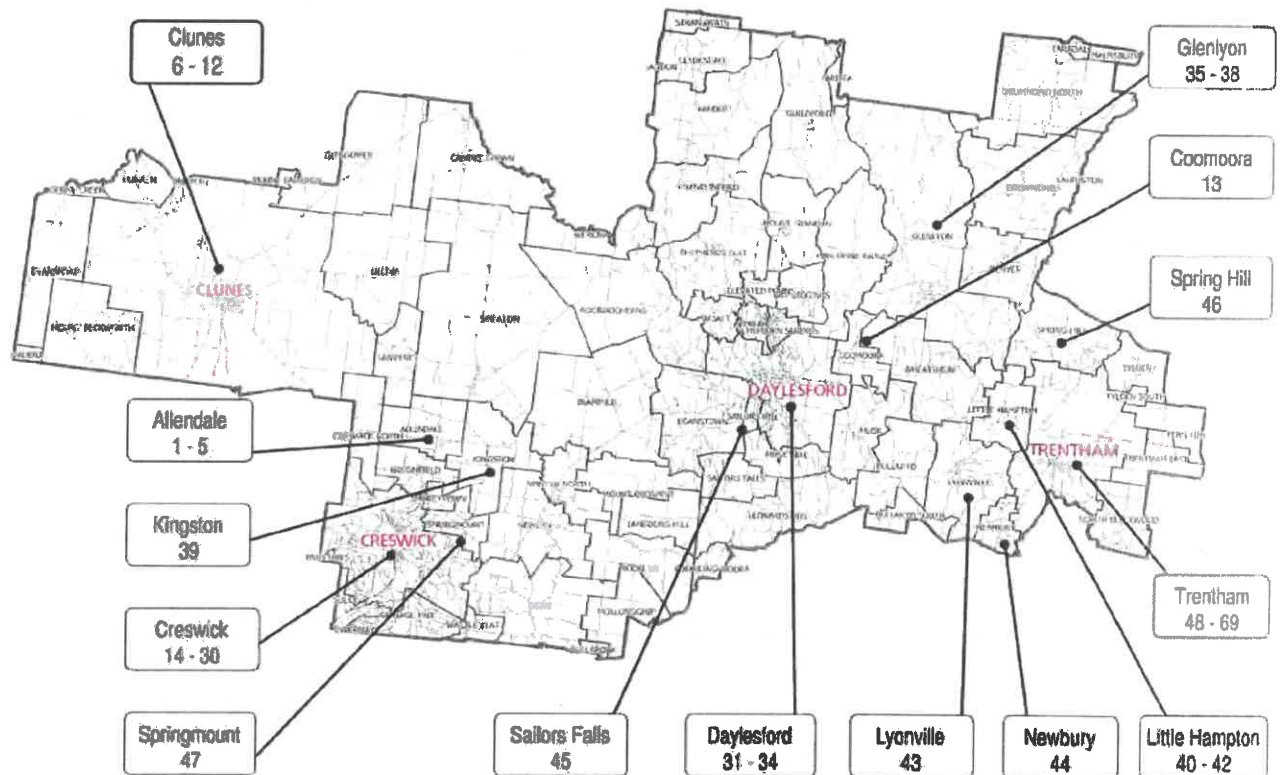
Aboriginal – with associations with aboriginal culture or heritage

Ecology – in a threatened, disjunct or depleted vegetation community or rare or indigenous species

A total of 70 nominations were received. The location and distribution of nominations are shown on Map 1.

# HEPBURN SIGNIFICANT TREE STUDY 2011

Figure 1. Location of Nominations (Total of 69 Nominations)



Change above map to include trees No 70 in Allendale

## Stage Two

In May 2011 Hepburn Shire Council commissioned Planit and TreEcology to prepare a Statement of Tree Significance Report (Stage Two) and a planning scheme amendment (Stage Three) to implement the Report.

The Stage Two process involved site inspections, collection of relevant information on the tree or trees such as photographs, archival material or oral evidence or history from property owners, community organisations or public authorities.

Two community workshops were held in early September 2011, one at Creswick and the other at Trentham. Persons who nominated a tree or trees and other interested persons were invited to attend the workshops. The initial draft of the Statement of Tree Significance Report was made available at the workshops. The purpose of the workshops were to provide an opportunity for nominees and other interested persons to view draft statements of significance for nominated trees and to provide further information to the consultants that may be useful to a fuller appreciation of the significance of a tree or group of trees.

This Statement of Tree Significance Report includes statements of significance for nominated trees except those trees that are currently covered with a Heritage Overlay or Vegetation Protection Overlay.



Statements of significance were not prepared for nominated trees with existing Heritage Overlay or Vegetation Protection Overlay control. An assessment was made as part of the amendment process that introduced these controls. Additional guidance for decision making on planning applications to lop/remove these trees will be provided by the Council Policy in respect to Vegetation Exemptions Protection.

The type of information compiled for each nomination and the system used to determine the levels and categories of significance are summarised in Chapter 3 of this Report.

The Statement of Tree Significance Report contains recommendations for the inclusion of trees or groups of trees onto Council's Significant Tree Register and for protection afforded by the Vegetation Protection Overlay or Heritage Overlay in the Hepburn Planning Scheme. The Report also includes guidelines for tree management.

### Stage Three

Stage Three involved the preparation of a planning scheme amendment to provide protection for trees recommended for inclusion on Council's Significant Tree Register.

The planning scheme amendment (Amendment C54 to the Hepburn Planning Scheme) includes recommended trees in the schedule to the Vegetation Protection Overlay and Heritage Overlay. The planning scheme amendment was placed on public exhibition for a period of one month in accordance with the requirements of the *Planning and Environment Act 1987*.

A total of 8 submissions were received. The amendment was revised following consideration of the submissions and all submissions were resolved without the amendment being referred to a Planning Panel.

This report has been revised following exhibition of the amendment to reflect the changes made. A summary of the changes is provided later in this report.

### Selection of Planning Tool

It was determined that the Vegetation Protection Overlay at Clause 42.02 of the planning scheme was the most appropriate planning tool to protect the majority of the trees recommended for inclusion on the Significant Tree Register.

The VPO is specifically designed to protect significant native and exotic vegetation in an urban or rural environment. It can be applied to individual trees, stands of trees or areas of significant vegetation (VPP Practice Note for Applying Vegetation Overlay). The VPO requires a permit to remove, destroy or lop any vegetation specified in the schedule to the overlay.

The VPO has been selected for the following reasons:

- methodology and criteria for assessing vegetation for its natural and cultural value almost exclusively refers to aesthetic and scientific reasons where historic significance is associated predominately with the age of the tree rather than a thematic historic event;
- assessment of vegetation important for its contribution to the character of an area commonly refers to the aesthetic visual contribution in a larger landscape, roadside verge or street tree planting;
- value of vegetation to the community and the factors that contribute to its value has been identified;

The Heritage Overlay has been used as the form of protection for 2 formal avenues planting at Allendale and Glenlyon. The roadside avenue of trees at Elizabeth Street Allendale were planted in 1901 to commemorate Federation. The avenue planting at Barkly Street, Glenlyon is a distinctive landmark feature of the town planted in 1898.

The application of the Heritage Overlay with the inclusion of tree controls in the Schedule requires a planning permit to remove, destroy or lop a listed tree or group of trees.

## **SUMMARY OF RECOMMENDATIONS**

### **Trees Recommended for Protection with Application of Vegetation Protection Overlay or Heritage Overlay**

A total of 70 nominated trees or groupings of trees have been recommended for inclusion on Council's Significant Tree Register and for implementation in the Hepburn Planning Scheme by the application of the Vegetation Protection Overlay or Heritage Overlay.

Use of the following Planning Scheme Overlays are recommended to protect trees recommended for inclusion on the Significant Tree Register:

- Existing Vegetation Protection Overlay Schedule 1 (Roadside Vegetation and Remnant Vegetation)
- Proposed new Vegetation Protection Overlay Schedule 2 (Significant Exotic and Native Vegetation)
- Existing Heritage Overlay

A full description of these trees, their statements of significance and recommendations are included in Chapter 5 of this Report.

### **Existing Vegetation Protection Overlay (VPO) Applying to Nominated Trees**

Some nominated trees are currently covered by a VPO in the Planning Scheme. This is considered to be adequate protection and it is **recommended** that the VPO continue to be applied to trees with the following index number as shown in the index table on page 12.

42, 54, 55, 56

Statements of significance have not been prepared for these nominated trees or groups of trees. These nominated trees or group of trees are protected by existing Vegetation Protection Overlay and in some instances they also included on the National Trust Tree Register. Guidance for decision on planning applications to lop/remove these trees will be provided by the Council Policy in respect to Vegetation Exemptions Protection.

### **The application of the Vegetation Protection Overlay (VPO) Schedule 1 (Roadside Vegetation and Remnant Vegetation)**

The purpose of the existing Vegetation Protection Overlay Schedule 1 is to protect remnant vegetation that provide important bio links; is of high conservation significance, or contributes to visual and scenic values.

The current provisions of the Schedule are confusing in respect to its specific reference to roadside conservation in the Schedule name. The overlay applies predominantly to private land and it is therefore proposed to amend the Schedule as part of the planning scheme amendment associated with the STR to provide greater clarity. It is also proposed to include the STR in the Decision Guidelines and Reference Document.

The application of the VPO1 is recommended for the nominations with the following index number as shown in the index table at page 11.

35, 40, 43, 46, 49, 50, 51, 58, 67, 68 and 69.

## **Trees Recommended for Protection with application of Vegetation Protection Overlay (VPO) Schedule 2 (Significant Exotic and Native Vegetation)**

A new Schedule to the Overlay is proposed as part of the planning scheme amendment to implement the STR. This Schedule refers to the criteria used by the National Trust's Register of Significant Trees and its emphasis is on the aesthetic or horticultural attributes of the tree rather than its environmental values.

Vegetation Protection Overlay 2 is recommended for all the remaining trees recommended for inclusion on the Significant Tree Register.

The application of the VPO2 is recommended for the nominations with the following index number as shown in the index table at page 12.

1, 2, 3, 6, 7, 8, 9, 10, 12, 13, 23, 24, 26, 27, 29, 30, 31, 32, 34, 38, 44, 47, 57, 59, 62, 63 and 66.

### **Existing Heritage Overlay (HO) with Tree Controls Applying to Nominated Trees**

Some of the nominated trees are already protected under the existing Heritage Overlay in the Planning Scheme. Continued protection is **recommended** for these trees.

Trees currently protected by the Heritage Overlay with tree controls include trees or groups of trees with the following index number as shown in the index table at page 11.

11, 19, 20, 21, 22, 25, 39, 48, 61, 64 and 65

Statements of significance have not been prepared for these nominated trees or groups of trees. These nominated trees or group of trees are protected by existing Heritage Overlay and in some instances they also included on the National Trust Tree Register. Guidance for decision on planning applications to lop/remove these trees will be provided by the Council Policy in respect to Vegetation Exemption Protection.

### **Trees Recommended for Protection with application of Heritage Overlay**

The application of the Heritage Overlay with tree controls is recommended for three street tree avenue plantings at Glenlyon and Allendale townships.

The avenue plantings in Barkly Street Glenlyon were donated to the town in 1898 and are a defining feature of the Glenlyon. The avenue plantings are considered to possibly have State significance due to their unusual planting pattern.

The street tree avenue planting in Elizabeth Street Allendale was planted in 1901 to commemorate Federation and are a feature of the local landscape.

Two (2) very old Oak trees among a roadside planting of English Elms in Creswick-Newstead Road, Allendale were probably also planted to commemorate Federation.

The application of the Heritage Overlay is recommended for the nominations with the following index number as shown in the index table at page 11.

5, 36 and 37.



### Existing Heritage Overlay (HO) without Tree Controls

In some instances, properties contain nominated trees listed in the HO schedule but with a 'No' in 'Tree Controls Apply' column. The planning scheme amendment to implement the Significant Tree Study recommends the application of the Vegetation Protection Overlay Schedule 2 for those trees within properties where the Heritage Overlay schedule specifies that no tree controls apply.

The application of the VPO2 is recommended for the nominations with the following index number as shown in the index table at page 11.

24, 30 and 57

### Trees Not Recommended for Significant Tree Register

The assessment approach assessed 5 nominated trees that were considered not to be of a level of significance to warrant listing on the Significant Tree Register. One nominated tree is located in an adjacent municipality.

Tree No.	Nomination No.	Common Name	Address	Reason for non-listing
4	56	Monterey Cypress	24 Parkin St, Allendale	Recent large limb failures will limit the tree's lifespan.
14	2	Narrow-leaved Black Peppermint	72 Clunes Rd, Creswick	Commonly planted in gardens, not endemic to area. The tree has structural faults typical of this species..
45	58	Candlebark, Elm & Hawthorn trees	Ridge Road corner Appleby Lane, Sailors Hill	Does not adequately meet criteria for significance. Old Hawthorn hedgerow limited in size and only of minor aesthetic and historic significance at local level. Candlebark is a young tree.
53	20	Redwood	Rear 11 Falls Road, Trentham	Owner withdrew nomination; tree could not be adequately assessed from the roadside
60	28 (52)	Manna Gum	Firth Road, Trentham East	Tree within Macedon Ranges Shire

Following exhibition of the amendment and consideration of submissions received, some additional trees were either removed from the Significant Tree Register or not included within a planning scheme overlay.

Tree No.	Nomination No.	Common Name	Address	Reason for non-listing or exclusion from planning controls
15	5	Abies nordmanniana	School of Forestry, Creswick	The tree is one of many significant trees on site that are worthy of protection. The university is undertaking a Management Plan that will apply management and protection measures to all the trees on the site.
16	6	Eucalyptus leucoxylon	School of Forestry,	The tree is one of many significant trees on site that are worthy of protection. The university is undertaking a Management Plan that will apply

			Creswick	management and protection measures to all the trees on the site.
17	7	Ulmus minor subsp sarniensis	School of Forestry, Creswick	The tree is one of many significant trees on site that are worthy of protection. The university is undertaking a Management Plan that will apply management and protection measures to all the trees on the site.
18	8	Eucalyptus melliodora	School of Forestry, Creswick	The tree is one of many significant trees on site that are worthy of protection. The university is undertaking a Management Plan that will apply management and protection measures to all the trees on the site.
28	65	Pinus Radiata	Le Gerche Walking Track, Sawpit Gully, Creswick	Statement of Significance inadvertently omitted from the report. To be considered in a future planning scheme amendment.
33	57	Castanea sativa	68B East Street Daylesford	Further structural assessment required. To be considered in a future planning scheme amendment.
41	33	Eucalyptus viminalis	Roths Road, West Side Road, Little Hampton	The tree is located within a Special Protection Zone within the Wombat State Forest. DELWP advises its internal processes provide adequate tree protection through legislation.
52	18	Pinus radiata	8 Brien Street Trentham	The tree has been severely pruned and through recent subdivision is now located within a residential allotment. The size and species of tree is unsuited to a residential site.
70	71	Quercus robur	Creswick - Newstead Road Allendale	The trees were incorrectly plotted on the exhibited planning scheme map. To be considered in a future planning scheme amendment.

## Parks and Reserves

During field assessment and discussion with nominees and workshop attendees it was observed and revealed that there are many trees and groupings of trees within public spaces and reserves (e.g. roadside avenues, parks, cemeteries, mineral springs reserves) that should be assessed in terms of their significance and potentially afforded protection through planning scheme instruments. It is recognised that this would be a substantial funding and resource commitment for Council. As a first step Council could identify priority parks, reserves and avenues for survey and assessment.

## Review and Updating of Significant Tree Register

It was clear during the course of the project that there is considerable support for Council's Significant Tree Register. At the community workshops, many trees, other than those nominated, were raised for discussion and were considered to be worthy for listing on the Register.

Trees are a dominant element of townscape and landscape character of the Shire's towns and villages. This has been identified and documented in previous Council studies and reports including the recent Hepburn

Planning Scheme Review project. The Significant Tree Register is a valuable Council and community resource and a means by which the character of the towns and rural areas can be protected over time. Ongoing reviews and updating of the Register are recommended. In particular, further work should include other trees already registered on the National Trust Significant Tree Register. It is important to note that although these trees are listed on the National Trust's Register, it does not provide any statutory protection which must be provided through the appropriate tools in the Hepburn Planning Scheme.

## **Key Recommendations**

### **Planning Scheme**

The following changes have been introduced to the Hepburn Planning Scheme to incorporate the findings of the Hepburn Significant Tree Study – Statements of Significance (2015):

- Update Clause 21.05 (Settlement and Housing) by identifying the need to protect significant trees as part of protecting and enhancing *"the heritage, landscape and townscape character of towns"* and including the Hepburn Significant Tree Study – Statements of Significance (2015) to the list of Reference Documents,
- Update Clause 21.09 (Environment and Heritage) by including the need to protect significant trees in a number of strategies, including the need to update the register under further strategic work and adding Hepburn Significant Tree Study – Statements of Significance (2015) to the list of Reference Documents,
- Amend Vegetation Protection Overlay (Schedule 1) to clarify the purpose of the Schedule, include the recommendations of the STR in the decision-making guidelines, and include the STR as a Reference Document.
- Insert new a schedule (Schedule 2 Significant Exotic and Native Vegetation) to the Vegetation Protection Overlay and apply to 39 nominated trees that are recommended for inclusion on the Significant Tree Register,
- Amend the Heritage Overlay schedule at 43.01 by inserting new items HO 984 and 985 with "Tree Controls Apply" to protect avenues of trees at Glenlyon and Allendale both recommended for inclusion on the Significant Tree Register

### **Council Policy in respect to Vegetation Exemption Protection**

It is recommended that Council Policy in respect to Vegetation Exemption Protection be used to guide decisions on planning applications to lop/remove a tree or group of trees, listed on the Hepburn Significant Tree Register, for which statements of significance have not been prepared but the tree or group of trees is covered by an existing Heritage Overlay or Vegetation Protection Overlay.

It is noted that Council is soon to commence a re-write of the Local Planning Policy Framework. There will be a good opportunity to revise and strengthen objectives and strategies in the Municipal Strategic Statement relating to significant trees and landscape in the Shire.

### **Standards for Tree Management**

That Council adopt the following Australian Standards for tree management in planning and design for works near to trees:

AS 4373-2007 *Pruning of amenity trees*

AS 4970-2009 *Protection of trees on development sites*

### **Further Assessments**

That Council call for nominations for the Significant Tree Register at 3 yearly intervals.

That Council identify priorities for future tree survey and assessment work amongst the Shire's tree avenues, parks, cemeteries, mineral spring reserves and other public spaces.

## **3. ASSESSMENT AND SELECTION CRITERIA**

### **Significant Tree Sheet Terms**

#### **Property Address**

The name of the reserve, or the address of the property, within which the tree is located.

#### **Survey Dates:**

The date(s) the assessment of the tree was carried out.

#### **Tree Identification Number**

Identification number of the tree as listed in the table "Hepburn Significant Tree Register Nominations"

#### **Botanical Name**

The botanical name of the tree as commonly accepted

#### **Common Name**

The common name of the tree as commonly accepted

#### **Location**

The position of the tree within the property

#### **No. of trees:**

The number of trees in the significant group (one for individual trees)

#### **Height, canopy spread, DBH (diameter at breast height):**

In some situations these were estimated, however the preferred option was to measure these accurately using a measuring wheel, clinometer and diameter tape. These measurements require regular updating to remain accurate, with accurate measurements being especially important when any development is to take place around the tree.

#### **Approximate Age of the Tree:**

The estimate age of the tree based on its size, previous records and the history of the tree's location

### **Categories Of Significance**

The methodology implemented for the identification and assessment of significant trees was based upon that of the National Trust of Australia (Victoria). In this, trees are identified as having significance based upon a number of criteria. The following criteria are considered:

1. Any tree which is of horticultural or genetic value and could be an important source of propagating stock, including specimens that are particularly resistant to disease or exposure.
2. Any tree which occurs in a unique location or context and so provides a contribution to the landscape, including remnant native vegetation, important landmarks, and trees which form part of an historic garden, park or town.
3. Any tree of a species or variety that is rare or has a highly localised distribution.
4. Any tree that is particularly old or venerable.
5. Any tree outstanding for its large height, trunk circumference or canopy spread.
6. Any tree of outstanding aesthetic significance.
7. Any tree which exhibits a curious growth form or physical feature such as abnormal outgrowths, natural fusion of branches, severe lightning damage or unusually pruned forms.
8. Any tree commemorating a particular occasion (including plantings by Royalty) or having associated with an important historical event.
9. Any tree associated with Aboriginal activities.
10. Any tree that is an outstanding example of the species.



## Categories and Sub Categories: National Trust of Victoria

### Category 1 : Horticultural Value

#### Category 2 : Location or Context

- 2-Historic Garden or Park
- 3-Historic Cemetery
- 4-Important Landmark
- 5-Remnant Native Vegetation
- 6-End of Natural Range
- 7-Contribution to Landscape
- 8-Historic Town
- 9-Historic Planting Style

#### Category 3 : Rare or localised

- 2-Only Known Specimen
- 3-1 to 10 Known Specimens
- 4-10 to 50 Known Specimens
- 5-In the Wild
- 6-End of Natural Range
- 7-Disjunct Community

#### Category 4 : Particularly Old

#### Category 5 : Outstanding Size

- 2-Height
- 3-Circumference
- 4-Canopy Spread
- 5-Height x Circumference
- 6-Spread x Circumference
- 7-Height x Circumference x Spread

### **Level of Significance:**

Trees were assessed using the National Trust criteria as a basis for significance and were compared against other trees in the municipality. Once trees were identified as being significant their level of significance was determined. This was divided into three categories:

### Category 6 : Aesthetic Value

#### Category 7 : Curious Growth Form

- 2-Abnormal Outgrowths
- 3- Fusion of Branches
- 4-Unusually Pruned
- 5-Unusually Damaged

#### Category 8 : Historical Value

- 2-Cultural Group
- 3-Public Feature
- 4-World War 1
- 5-World War 11
- 6-British Royalty
- 7-Non-British Royalty
- 8-Visiting Dignitary
- 9-Australian Public Figure
- 10-Victorian Public Figure

#### Category 9 : Aboriginal Culture

- 1-Scarred Tree
- 2-Corroboree Tree

#### Category 10 : Outstanding Example of Species

### Trees of Local Significance

This included trees that were of significance to the local area due to their scientific, historic or aesthetic value.

### Trees of State Significance

This included trees that were considered to be significance to the State of Victoria. This included trees that were of particular rarity or horticultural value and trees associated with the wider history of the State of Victoria.

### Statement of Significance:

A summary of why the tree is significant and its level of significance.

### **Australian Heritage Council Register of the National Estate Heritage Criteria,**

Assessments of nominated trees have also considered the Australian Heritage Commission's eight broad criteria. These criteria, which are contained in the Victorian Planning Provisions Practice Note (DPCD February 1999) include:

**Criterion A:** its importance in the course, or pattern, of Australia's natural or cultural history

**Criterion B:** its possession of uncommon, rare or endangered aspects of Australia's natural or cultural history

**Criterion C:** its potential to yield information that will contribute to an understanding of Australia's natural or cultural history

**Criterion D:** its importance in demonstrating the principal characteristics of:

- (i) a class of Australia's natural or cultural places; or
- (ii) a class of Australia's natural or cultural environments

**Criterion E:** its importance in exhibiting particular aesthetic characteristics valued by a community or cultural group

**Criterion F:** its importance in demonstrating a high degree of creative or technical achievement at a particular period

**Criterion G:** its strong or special associations with a particular community or cultural group for social, cultural or spiritual reasons

**Criterion H:** its special association with the life or works of a person, or group of persons, of importance in Australia's natural or cultural history.

#### 4. INDEX OF NOMINATED TREES

Tree No.	Nom No.	Report Page No.	Botanical Name	No. Of Trees	Township Address	Proposed Planning Sch Overlay VPO HO	Planning Scheme Map No:
1	53	18	Ulmus spp	21	Allendale, Roadside Loughlin St Parkin St	Proposed VPO2	24VPO
2	54	19	Quercus (4 species)	4	Allendale, 24 Parkin St (2 Property, 2 roadside	Proposed VPO2	24VPO
3	55	20	Pyrus ussuriensis	1	Allendale, 24 Parkin St	Proposed VPO2	24VPO
4	56	6	Cupressus macrocarpa	1	Allendale, 24 Parkin St	STR not recommended	N/A
5	59	21	Ulmus spp	12	Allendale, Roadside, Elizabeth St	Proposed HO984	24HO
6	1	22	Malus spp	1	Clunes, Clunes-Creswick Road	Proposed VPO2	10VPO
7	10	23	Cedrus atlantica	1	Clunes, 14 Sutherland Street	Proposed VPO2	11VPO
8	11	24	Pinus canariensis	2	Clunes, 14 Sutherland Street	Proposed VPO2	11VPO
9	12	25	Araucaria bidwillii	1	Clunes, 14 Sutherland Street	Proposed VPO2	11VPO
10	13	26	Schinus x areira (syn. S.molle)	1	Clunes, Creswick Creek (below ford)	Proposed VPO2	11VPO
11	14	5	Crataegus monogyna	7	Clunes, Hill Street nature strip	Existing HO 776 with tree controls	N/A
12	70	27	Quercus robur	1	Clunes, Rose Hill' Learmonth Rd	Proposed VPO2	10VPO
13	68	28	Cupressus macrocarpa	3	Coomoora, Courtneys Ln, adjacent 41 Matts	Proposed VPO2	36VPO
14	2	6	Eucalyptus nicholii	1	Creswick, 72 Clunes Road	STR not recommended	N/A
15	5	29	Abies nordmanniana	1	Creswick, School of Forestry	Management Plan for entire site to be undertaken. Existing HO 20 with no tree controls	N/A
16	6	30	Eucalyptus leucoxylon	1	Creswick, School of Forestry	Management Plan for entire site to be undertaken. Existing HO 20 with no tree controls	N/A
17	7	31	Ulmus minor subsp sarniensis	1	Creswick, School of Forestry	Management Plan for entire site to be undertaken. Existing HO 20 with no tree controls	N/A
18	8	32	Eucalyptus melliodora	group	Creswick, Uni of Melb., School of Forestry,	Management Plan for entire site to be undertaken. Existing HO 20 with no tree controls	N/A

Tree No.	Nom No.	Report Page No.	Botanical Name	No. Of Trees	Township Address	Proposed Planning Sch Overlay VPO HO	Planning Scheme Map No:
19	45	5	Ulmus x hollandica	10	Creswick, Median Strip in Cambridge St, between Victoria and Raglan St	Existing HO 823 Tree Controls apply	N/A
20	46	5	Pinus muricata	1	Creswick, Park Lake Reserve, Original Botanical Gardens, Daylesford Rd	Existing HO 846 Tree controls apply	N/A
21	47	5	Dliis Cupressus	many	Creswick, Park Lake Reserve, Botanical Gardens, Daylesford Rd	Existing HO 846 Tree controls apply	N/A
22	48	5	Magnolia grandiflora	1	Creswick, Park Lake Reserve, Original Botanical Gardens, Daylesford Rd	Existing HO 846 Tree controls apply	N/A
23	49	33	Platanus x acerifolius	20-30	Creswick, Median Strip, Albert Street	Proposed VPO2	23VPO
24	50	34	Sequoiadendron giganteum	2	Creswick, Entrance to St Pauls church Napier St	Proposed VPO2 Existing HO 39 with no tree controls	23VPO
25	51	5	Abies pinsapo	1	Creswick, Cnr Napier and Hall St	Existing HO 386 with tree controls	N/A
26	63	35	Quercus canariensis	1	Creswick, 64 Napier St, rear	Proposed VPO2	23VPO
27	64	36	Aesculus hippocastanum	1	Creswick, 64 Napier St, rear	Proposed VPO2	23VPO
28	65	7	Pinus radiata	1	Creswick, Le Gerche Walking Track, Sawpit Gully	Existing NT T12110 Statement of Significance inadvertently omitted. To be considered in a future planning scheme amendment	N/A
29	66	37	Eucalyptus dives	1	Creswick, 15 St Georges Lake Rd	Proposed VPO2	23VPO
30	67	38	Magnolia grandiflora	1	Creswick, 131 Napier St (Front of House)	Proposed VPO2 Existing HO813 with no tree controls	23VPO
31	43	39	Quercus robur	1	Daylesford, 1 Bellbird Lane Daylesford, off Central Springs Rd	Proposed VPO2	31VPO
32	44	40	Castanea sativa	3	Daylesford, 31 Stanbridge St	Proposed VPO2 Ex-N'hood Character Overlay	33VPO
33	57	41	Castanea sativa	1	Daylesford, 68B East St	Further structural assessment required. To be considered in a future planning scheme amendment.	N/A

Tree No.	Nom No.	Report Page No.	Botanical Name	No. Of Trees	Township Address	Proposed Planning Sch Overlay VPO HO	Planning Scheme Map No:
34	69	42	Sequoiadendron giganteum	4	Daylesford, Victoria Caravan Park	Proposed VPO2	33VPO
35	3	43	Eucalyptus melliodora		<i>Green Hill</i> Glenlyon, Roadside, Torpys Road	Proposed VPO1	17VPO
36	60	44	Ulmus procera	21	Glenlyon, Barkly St, Molesworth St to store	Proposed HO985	17HO
37	61	45	Quercus robur	18	Glenlyon, Barkly St, Molesworth to store	Proposed HO 985	17HO
38	62	46	Q. canariensis	1	Glenlyon, Barkly St, Molesworth St to store	Proposed VPO2	17VPO
39		5	Ulmus x hollandica	Stand	Kingston, Creswick Newstead Rd Avenue of Honour	Existing HO 385 with tree controls. NT T11518	N/A
40	32	47	Eucalyptus viminalis	1	Little Hampton, Rothes Rd Little Hampton, West Side Rd	Proposed VPO1	38VPO
41	33	48	Eucalyptus viminalis	1	Little Hampton Near cnr Bridge Road & Reed Track, Little Hampton	The tree is located within a Special Protection Zone within the Wombat State Forest. DELWP advises its internal processes provide adequate tree protection through legislation	N/A
42	27	49	Eucalyptus viminalis	1	Little Hampton, Grounds of old Little Hampton School, Little Hampton and Justices Rds	Existing VPO	N/A
43	41	50	Eucalyptus brookeriana	Stand	Lyonville South , Kearneys and Roaches Roads	Proposed VPO1	45VPO
44	34	51	Castanea sativa	1	Newbury, 10 Donald Lane	Proposed VPO2	46VPO
45	58	52	Eucalyptus rubida, Ulmus spp Crataegus	26	<i>Sailors Hill</i> , Junction of Ridge Rd and Appleby Lane	STR not recommended	N/A
46	40	53	Banksia marginata	1	Spring Hill, Spring Hill Cemetery	Proposed VPO1	18VPO
47	9	54	Allocasuarina verticillata	1	Springmount, 169 Alcorns Road	Proposed VPO2	24VPO
48	4	5	Abies picea 'Glaucua'	1	Trentham, Square Corner Cosmo and High St	Existing HO 350 HO 362 with tree controls	N/A
49	15	55	Eucalyptus pauciflora	1	Trentham, Roadside, 2140 Trentham Falls Road	Proposed VPO1	38VPO
50	16	56	Eucalyptus obliqua	1	Trentham, Daylesford Trentham Rd, west of Coliban River, near 1964 Daylesford Rd)	Proposed VPO1	38VPO



Tree No.	Nom No.	Report Page No.	Botanical Name	No. Of Trees	Township Address	Proposed Planning Sch Overlay VPO HO	Planning Scheme Map No:
51	17	57	Eucalyptus obliqua	1	Trentham, Former forest commission nursery, 60 Mulcahys Road	Proposed VPO1	38VPO
52	18	58	Pinus radiata	1	Trentham, Cnr Gleeson & Racecourse Rd (8 Brien St)	The tree has been severely pruned and through recent subdivision is now located within a residential allotment. The size and species of tree is unsuited to a residential site.	N/A
53	20	6	Sequoia sempervirens	1	Trentham, Garden 11 Falls Road	STR not recommended	N/A
54	21	4	Eucalyptus pauciflora	Stand	Trentham, Trentham - Tylden Rd, Between Newtons Lane and Forest Street	Existing VPO	N/A
55	22	4	Eucalyptus viminalis	Stand	Trentham, Trentham - Tylden Road, Between Newtons Lane and Forest Street	Existing VPO	N/A
56	23	4	Eucalyptus radiata	Stand	Trentham, -Tylden Road, Between Newtons Lane and Forest Street	Existing VPO	N/A
57	24	59	Chamaecyparis lawsoniana	1	Trentham, Rear of Old Police Station, Camp St	Proposed VPO2 Existing HO367 with no tree controls	39VPO
58	25	60	Eucalyptus dalrympleana	Stand	Trentham Roadside, Trentham - Blackwood Road, opp. Transfer Station	Proposed VPO1	38VPO & 39VPO
59	26	61	Acer saccharum	1	Trentham, Apex Park near Swimming Pool, Market St	Proposed VPO2	39VPO
60	28	6	Eucalyptus viminalis	1	Trentham, Firth Rd, Trentham	Not in Hepburn Shire	N/A
61	29	5	Ulmus x hollandica	127	Trentham, Bridge Street b/n Forest & High S: Cosmo Rd b/n High St & West St	Existing HO 837 HO 835 with tree controls.	N/A
62	30	62	Sequoia sempervirens	1	Trentham, Amelia Road off the Trentham - Newbury Road	Proposed VPO2	46VPO
63	31	63	Abies menziesii	50+	Trentham, Amelia Road off the Trentham - Newbury Road	Proposed VPO2	46VPO
64	35	5	Eucalyptus spp		Trentham, Trentham Cemetery	Existing HO 10 with tree controls	N/A
65	36	5	Acacia melanoxylon		Trentham, Trentham Cemetery	Existing HO 10 with tree controls	N/A

Tree No.	Nom No.	Report Page No.	Botanical Name	No. Of Trees	Township Address	Proposed Planning Sch Overlay VPO HO	Planning Scheme Map No:
66	37	64	<i>Sequoia sempervirens or Sequoiadendron giganteum</i>	1	<i>Trentham</i> , 33 Park Street	Proposed VPO2	38VPO & 39VPO
67	38	65	<i>Eucalyptus viminalis</i>	Stand	<i>Trentham</i> Falls Rd East Side between <i>Trentham</i> -Daylesford Rd and Golf Club	Proposed VPO1	38VPO
68	39	66	<i>Eucalyptus radiata</i>	Stand	<i>Trentham</i> , Falls Rd East Side between <i>Trentham</i> -Daylesford Rd and Golf Club	Proposed VPO1	38VPO
69	19	67	<i>Eucalyptus viminalis</i>	1	<i>Trentham</i> , Horvaths Rd Remnant Wombat Forest	Proposed VPO1	38VPO
70	71	68	<i>Quercus robur</i>	2	<i>Creswick</i> , <i>Creswick</i> – <i>Newstead</i> Road	Incorrectly plotted on map. To be considered in a future planning scheme amendment	N/A

VPO Vegetation Protection Overlay

HO Heritage Overlay

## **5. STATEMENTS OF SIGNIFICANCE**

<b>Tree No:</b>	<b>1</b>	(Nominated tree# 53)
<b>Address:</b>	24 Parkin Street, Allendale	
<b>PS Map No:</b>	24VPO	
<b>Lat/longitude:</b>	S37.371752 E143.924128	
<b>Survey Date:</b>	25 August 2011	
<b>Botanical Name:</b>	Ulmus x hollandica or U. procera	
<b>Common Name:</b>	Dutch Elm or English Elm	
<b>Location:</b>	Loughlin Street verge near corner of Leishman Street	
<b>No. of trees:</b>	1	
<b>Height:</b>	12	
<b>Canopy Spread (m):</b>	E-W 12	N-S 15
<b>Girth / DBH:</b>	2.47m / 780mm	
<b>Approx. Age of Tree:</b>	100yr+	
<b>Vigour / condition:</b>	Good / good; life expectancy 30yr+	
<b>Owner / access:</b>	Shire of Hepburn / unrestricted	
<b>Significance Category:</b>	2 (7) Context-contribution to landscape, 6 (1) Aesthetic value, 8(1) Historic values	
<b>What is significant:</b>	The Dutch Elm growing in the Loughlin Street roadside verge.	
<b>How is it significant:</b>	The Elm is significant for historic and aesthetic reasons at a local level.	
<b>Why is it significant:</b>	The tree is a good example of a mature Elm. The tree may have been planted to commemorate Federation.	
<b>Recommendation:</b>	Nominated tree #56 to be added to the Significant Tree Register and Vegetation Protection Overlay to be applied.	
<b>Management:</b>	The tree is growing in a wide verge on an unsealed road which permits good infiltration of rainfall. If upgrading of the road or underground services occurs then establish a setback from disturbance that extends 12 x trunk DBH (measured at the time such works occur).	
<b>Comments:</b>	A smaller Elm to the north within the verge was also nominated but is small and suppressed.	



**Assessor:** S. Slaytor      **Referee:** Alan and Coralie Lethbridge

**Tree No:** 2 (Nominated tree# 54)

**Address:** 24 Parkin Street, Allendale

**PS Map No:** 24VPO**Lat/longitude:** *Indicated below images of trees*

**Survey Date:** 25 August 2011

**Botanical Name:** Quercus spp

**Common Name:** Oak

**Location:** 2 in verge – Leishman Street, Loughlin Street  
2 within property

**No. of trees:** 4

**Height:** 10 - 15

**Canopy Spread (m) :** 13 to 20

**Girth:** 2.4 – 3.17

**Approx. Age of Tree:** 100yrs+

**Vigour / condition:** Good / good; life expectancy 40yrs+

**Owner / access:** Private / restricted (property)  
Shire of Hepburn / unrestricted (street)

**Planning status:** None

**Significance Category:** 2 (7) Context-contribution to landscape, 6 (1) Aesthetic value, 8 (1) Historic

**What is significant:** The four species of Oak on and adjacent to the property that were originally in the gardens of old cottages that once occupied this site.

**How is it significant:** The Oaks are significant for historic, scientific and aesthetic reasons at a local level.

**Why is it significant:** The trees are old and were probably planted by miners or to commemorate Federation. The small township of Allendale is surrounded by open grazing land and the deciduous trees are a feature of the town.

**Recommendation:** Nominated trees #54 are to be added to the Significant Tree Register and Vegetation Protection Overlay Schedule 2 to be applied.

**Management:** Trees are growing in relatively undisturbed areas. Avoid future disturbance within the area extending 5 metres past the canopy edge.

**Assessor:** S. Slaytor **Referee:** Alan and Coralie Lethbridge



S37.371402 E143.924267



S37.371551 E143.924396



S37.372007 E143.924589 (Leishman St)



S37.371035 E143.924214 (Loughlin)



<b>Tree No:</b>	3 (Nominated tree# 55)
<b>Address:</b>	24 Parkin Street, Allendale
<b>PS Map No:</b>	24VPO
<b>Lat/longitude:</b>	S 37.371551 E 143.924396
<b>Survey Date:</b>	25 August 2011
<b>Botanical Name:</b>	<i>Pyrus ussuriensis</i>
<b>Common Name:</b>	Manchurian Pear
<b>Location:</b>	Between SW corner of house and Loughlin Street
<b>No. of trees:</b>	1
<b>Height:</b>	8
<b>Canopy Spread (m) :</b>	E-W 10 N-S 10
<b>Girth:</b>	1.8m base, 2 stems 325 & 425mm diameter
<b>Approx. Age of Tree:</b>	100
<b>Vigour / condition:</b>	Excellent / excellent; life expectancy 40yrs+
<b>Owner / access:</b>	Private / restricted
<b>Planning status:</b>	None
<b>Significance Category:</b>	6 (1) Aesthetic value, 8 (1) Historic, 10 (1) Outstanding example of species
<b>What is significant:</b>	The Manchurian Pear that was originally in the garden of an old cottage once occupying this site.
<b>How is it significant:</b>	The Pear is significant for historic and aesthetic reasons at a local level.
<b>Why is it significant:</b>	The pears produced were made into a pickle that was eaten with meat in early times (comment by Referees). This old Pear is an outstanding example of the species.
<b>Recommendation:</b>	Nominated tree #55 to be added to the Significant Tree Register and Vegetation Protection Overlay to be applied.
<b>Management:</b>	Maintain existing regime by avoiding changes within 6 metres of trunk.
<b>Assessor:</b>	S. Slaytor
<b>Referee:</b>	Alan and Coralie Lethbridge



**Tree No:** 5 (Nominated tree# 59)

**Address:** Elizabeth Street, Allendale

**PS Map No:** 24HO

**Lat/longitude:** S37.370771 E143.919568 to S37.370831 E143.921263

**Survey Date:** 25 July 2011

**Botanical Name:** Ulmus spp

**Common Name:** Elm

**Location:** Roadside Avenue planting

**No. of trees:** 12

**Height:** 12 to 15m

**Canopy Spread (m) :** 15 to 25m

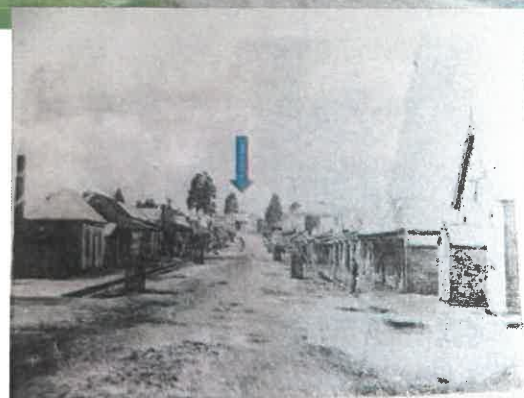
**DBH:** 450 to 1060mm

**Approx. Age of Tree:** 110

**Vigour / condition:** Good / good

**Owner / access:** Shire of Hepburn / unrestricted

**Planning status:** None



**Significance Category:** 2 (7) Context-contribution to landscape, 6 (1) Aesthetic value, 8(1) Historical value

**What is significant:** The Elms growing in the roadside verges that form an avenue.

**How is it significant:** The Elms are significant for aesthetic and historical reasons at a local level.

**Why is it significant:** The small township of Allendale is surrounded by open grazing land and the deciduous exotic trees are a feature of the local landscape. These trees were planted in 1901 to commemorate Federation (image above).

**Recommendation:** Nominated trees # 59 to be added to the Significant Tree Register and the Heritage Overlay to be applied.

**Management:** Elizabeth Street is unsealed and undrained. Any future excavation works pose a risk to the trees and will initiate root suckering. The trees were noted as Golden Elm on the nomination form but the structure of the trees is atypical. Identification is required later in season when in leaf.

**Assessor:** S. Slaytor **Referee:** Reg and Helen Caudry

**Tree No:** 6 (Nominated tree# 1)  
**Address:** Clunes-Creswick Road, Clunes  
**PS Map No:** 10VPO  
**Lat/longitude:** ?  
**Survey Date:** 25 August 2011  
**Botanical Name:** Malus spp  
**Common Name:** Crabapple  
**Location:** Opposite Pettigrew's farm approx. 2km from Clunes  
**No. of trees:** 1  
**Height:** 4  
**Canopy Spread (m)** 5  
**Girth / DBH:** 250  
**Approx. Age of Tree:** 110yrs+  
**Vigour / Condition:** Fair / fair, expected lifespan 20yrs+  
**Owner / access:** Private / restricted  
**Planning status:** None  
**Significance Category:** 2(7) Context, 4 (1) Particularly old  
7 (1) Curious growth form  
**What is significant:** The Crabapple tree at the frontage which is a remnant planting from an old cottage garden at the site.  
**How is it significant:** The Crabapple has scientific, historic and social significance at a local scale.  
**Why is it significant:** The tree is very old and of horticultural interest; it has an unusual twist to the trunk. It is the only tree in this open landscape. In the 19<sup>th</sup> century cottages once lined the road from Clunes to Merrifield. Remains of a stone wall and hewn timber are nearby. The garden was established by Mary Dickson and the property was purchased by the ancestors of the present owner between 1898 and 1903.  
**Recommendation:** Nomination #1 (which is a garden remnant) to be added to the Significant Tree Register and Vegetation Protection Overlay to be applied.  
**Management:** Protect tree with a fence located 3m beyond canopy edge if the paddock is grazed.  
**Assessor:** S. Slaytor **Referee:** Christine Rowe



**Tree No:** 7 (Nominated tree# 10)

**Address:** 14 Sutherland Street Clunes

**PS Map No:** 11VPO

**Lat/longitude:** S 37.18.256 E143.47.132 (WGS84)

**Survey Date:** 26 July 2011

**Botanical Name:** *Cedrus atlantica*

**Common Name:** Atlas Cedar

**Location on site:** 35m SW of house

**No. of trees:** 1

**Height:** 28

**Canopy Spread (m)** 28 to 38m

**Girth / DBH:** 10m



**Approx. Age of Tree:** 130yrs

**Vigour / Condition:** Good / good; life expectancy 30+yrs

**Owner / access:** Private / restricted

**Planning Status:** None. Heritage Overlays are on adjoining sites.

**Significance Category:** 2 (7) Location – contribution to landscape, 4 (1) Particularly old, 5 (6) Outstanding size – girth & spread) Curious growth form, 8 (1, 10) Historic value

**What is significant:** The Atlas Cedar growing among other conifers at the property.

**How is it significant:** The tree is significant for aesthetic, historic and scientific reasons on a local level.

**Why is it significant:** The Atlas Cedar displays an unusual multi-stemmed form. Trees on the property were planted in the 1880s and may have been supplied by Baron Ferdinand Von Mueller. The garden is visually prominent at the edge of an escarpment above the Creswick Creek. The plantings contribute to the landscape aesthetic.

**Recommendation:** Nominated tree #10 to be added to the Significant Tree Register and Vegetation Protection Overlay to be applied.

**Management:** The tree is part of a stand of conifers planted in the garden; the trees provide each other with wind protection so it is important to maintain the integrity of the stand.

**Assessor:** S. Slaytor **Referee:** Ron Hatelly



<b>Tree No:</b>	8 (Nominated tree# 11)
<b>Address:</b>	14 Sutherland Street Clunes
<b>PS Map No:</b>	11VPO
<b>Lat/longitude:</b>	S 37.18.272 E143.47.131 (WGS84)
<b>Survey Date:</b>	26 July 2011
<b>Botanical Name:</b>	<i>Pinus canariensis</i>
<b>Common Name:</b>	Canary Island Pine
<b>Location on site:</b>	South boundary between house and cottage
<b>No. of trees:</b>	2
<b>Height:</b>	30
<b>Canopy Spread (m)</b>	18m
<b>Girth / DBH:</b>	3.46m / 1100mm
<b>Approx. Age of Tree:</b>	130yrs
<b>Vigour / Condition:</b>	Excellent / excellent, life expectancy 30+yrs
<b>Owner / access:</b>	Private / restricted
<b>Planning Status</b>	None, but HOs on adjoining sites.
<b>Significance Category:</b>	2 (7) Location – contribution to landscape, 4 (1) Particularly old, 10 (1) Outstanding example of species, 8 (1,10) Historic value
<b>What is significant:</b>	The Canary Island Pines growing among other conifers at the property.
<b>How is it significant:</b>	The trees are significant for aesthetic, historic and scientific reasons on a local level.
<b>Why is it significant:</b>	The Canary Island Pines display excellent form and vigour. Trees on the property were planted in the 1880s and may have been supplied by Baron Ferdinand Von Mueller. The plantings contribute to the landscape aesthetic.
<b>Recommendation:</b>	Nominated tree #11 to be added to the Significant Tree Register and Vegetation Protection Overlay to be applied.
<b>Management:</b>	The trees are growing on a boundary in an undisturbed area; any development on the adjoining southern lot is to maintain a setback of 15m from the trunks.
<b>Assessor:</b> S. Slaytor	<b>Referee:</b> Ron Hatelty





**Tree No:** 9 (Nominated tree# 12)

**Address:** 14 Sutherland Street Clunes

**PS Map No:** 11VPO

**Lat/longitude:** S 37.18.275 E143.47.147 (WGS84)

**Survey Date:** 26 July 2011

**Botanical Name:** *Araucaria bidwillii*

**Common Name:** Bunya Pine

**Location on site:** Between house and cottage

**No. of trees:** 1

**Height:** 25

**Canopy Spread (m)** 20m

**Girth / DBH:** 4.47m / 1420mm

**Approx. Age of Tree:** 130yrs

**Vigour / Condition:** Fair / good; life expectancy 20+yrs

**Owner / access:** Private / restricted

**Planning Status** None, but HOs on adjoining sites

**Significance Category:** 2 (7) Location – contribution to landscape, 4 (1) Particularly old, 8 (1, 10) Historic value

**What is significant:** The Bunya Pine growing among other conifers at the property.

**How is it significant:** The tree is significant for aesthetic, historic and scientific reasons on a local level.

**Why is it significant:** The Bunya Pine is old and has a beautifully textured trunk; it is within a stand of conifers planted in the 1880s that may have been supplied by Baron Ferdinand Von Mueller. The garden is visually prominent being located at the edge of an escarpment above Creswick Creek so the plantings contribute to the landscape aesthetic.

**Recommendation:** Nominated tree #12 to be added to the Significant Tree Register and Vegetation Protection Overlay to be applied.

**Management:** Lower canopy deadwood that is present is normal in a close stand of trees; avoid unnecessary removal of other trees which would expose retained trees to unaccustomed wind forces.

**Assessor:** S. Slaytor **Referee:** Ron Hately



<b>Tree No:</b>	<b>10</b> (Nominated tree# 13)	
<b>Address:</b>	Creswick Creek Clunes	
<b>PS Map No:</b>	11VPO	
<b>Lat/longitude:</b>	S37.17.432 E143.46.965 (WGS84)	
<b>Survey Date:</b>	26 July 2011	
<b>Botanical Name:</b>	Schinus x areira (syn. Schinus molle)	
<b>Common Name:</b>	Pepper Tree	
<b>Location on site:</b>	North side of creek, Northwest of Camp St ford	
<b>No. of trees:</b>	1	
<b>Height:</b>	25	
<b>Canopy Spread (m)</b>	25m	
<b>Girth / DBH:</b>	7.9m base	
<b>Approx. Age of Tree:</b>	130yrs	
<b>Vigour / Condition:</b>	Good / good; life expectancy 40+yrs	
<b>Owner / access:</b>	Shire of Hepburn / unrestricted	
<b>Planning Status:</b>	Adjacent to HO 776.	
<b>Significance Category:</b>	2 (7) Location – contribution to landscape, 4 (1) Particularly old, 5 (1) Outstanding size, 8 (1) Historic value	
<b>What is significant:</b>	The Pepper Tree growing at the top of the bank above Creswick Creek.	
<b>How is it significant:</b>	The tree is significant for aesthetic, historic, social and scientific reasons on a local level.	
<b>Why is it significant:</b>	The Pepper Tree is a large specimen that probably dates back to the early history of the township. It is located above the Creswick Creek on public land and contributes to the landscape aesthetics. In the past this tree was popular with children who would swing from ropes into the swimming hole (comment by referee Ron Hately).	
<b>Recommendation:</b>	Nominated tree #13 to be added to the Significant Tree Register and Vegetation Protection Overlay to be applied.	
<b>Management:</b>	The tree can be considered an environmental weed but there is no evidence of recruitment in the area. Maintain a tree protection setback that extends 5 metres beyond the canopy edge during any future works.	
<b>Assessor:</b> S. Slaytor	<b>Referee:</b> Ron Hately	

**Tree No:** 12 (Nominated tree# 70)

**Address:** "Rose Hill" Learmonth Road, Clunes

**PS Map No:** 10VPO

**Lat/longitude:** S37.19.251 E143.45.973 (WGS84)

**Survey Date:** 26 July 2011

**Botanical Name:** Quercus robur

**Common Name:** English Oak

**Location on site:** NE cnr near road

**No. of trees:** 1

**Height:** 14

**Canopy Spread (m)** 15m

**Girth / DBH:** 3.4m / 1080mm

**Approx. Age of Tree:** 90yrs?

**Vigour / Condition:** Good / fair; life expectancy 20yrs+

**Owner / access:** Private / restricted

**Planning Status:** None



**Significance Category:** 2 (7) Location – contribution to landscape,  
8 (1) Historic values

**What is significant:** The Oak Tree growing near Learmonth Road at Clunes.

**How is it significant:** The tree is significant for historic and aesthetic reasons on a local level.

**Why is it significant:** The Oak is one of few trees in this area and contributes to the landscape aesthetics. It was planted by the grandfather of the current landholder from an acorn brought back from England.

**Recommendation:** Nominated tree # 70 to be added to the Significant Tree Register and Vegetation Protection Overlay to be applied.

**Management:** The tree has basal decay in the trunk on the west side caused by the failure of a large branch; it is unlikely to affect the stability of the tree.

**Assessor:** S. Slaytor **Referee:** Tom Wickham

**Tree No:** 13 (Nominated tree# 68)

**Address:** 41 Matts Lane, Coomoora

**PS Map No:** 36VPO

**Lat/longitude:** S37.334947 E144.183503

**Survey Date:** 24 August 2011

**Botanical Name:** *Cupressus macrocarpa*

**Common Name:** Monterey Cypress

**Location on site:** Courtneys Lane (adjacent to south boundary of lot)

**No. of trees:** 3

**Height:** 18 to 23m

**Canopy Spread (m) E-W:** 24m **N-S:** 28m

**Girth / DBH:** west tree 8.65m, centre 7.75m, east 7.25m

**Approx. Age of Tree:** 100yrs?

**Vigour / Condition:** Good / good; life expectancy 20yrs+

**Owner / access:** Private / restricted

**Planning Status:** None

**Significance Category:** 2 (7) Location – contribution to landscape, 8 (1) Historic, 10 (1) Outstanding example of species

**What is significant:** The three Cypress trees growing in Courtneys Lane at Coomoora.

**How is it significant:** The trees are significant for historic and aesthetic reasons at a local level.

**Why is it significant:** The large Cypresses contribute to the landscape character. The trees were planted wide apart and have developed without competition from other trees which has allowed each of them to form a broad crown. The trees were originally planted along the tram-line embankment which ran to a puddling works on Wallaby Creek.

**Recommendation:** Nominated trees # 68 to be added to the Significant Tree Register and Vegetation Protection Overlay to be applied.

**Management:** It is unusual for this species to be grown so widely spaced apart so the trees have developed a broad canopy with many small scaffold limbs. This has resulted in the trees being notably free of structural problems that normally lead to large branch failures in old Cypresses in stands (usually grown as a hedge).

**Assessor:** S. Slaytor **Referee:** Ian and Jenny Jordan





**Tree No:** 15 (Nominated tree# 5)

**Address:** University of Melbourne, School of Forestry & Ecosystem Science, Creswick

**PS Map No:** 23VPO

**Lat/longitude:** S37.423506 E143.898132

**Survey Date:** 5 Sept 2011

**Botanical Name:** *Abies nordmanniana*

**Common Name:** Caucasian Fir

**Location:** Northwest of Tremeame House  
at southwest of site

**No. of trees:** 1

**Height:** 17

**Canopy Spread (m)** E-W: 8 N-S: 8

**Girth / DBH:** 2.15 m / 685mm

**Approx. Age of Tree:** 80yr+?

**Vigour / condition:** Fair / good; life expectancy 15+yrs\*

**Owner / access:** Private / restricted

**Planning status:** HO 20. Tree controls do not apply.

**Significance Category:** 2 (2) Historic site, 2 (7) Context, 3 (1) Rare



**What is significant:** The Caucasian Fir planted in the School of Forestry grounds.

**How is it significant:** The Caucasian Fir is significant for historic, social and scientific reasons at a local level.

**Why is it significant:** The tree is scientifically significant as a rarely planted species. The tree contributes to the historic, social and aesthetic values of the site which has operated as a forestry education centre for over 100 years.

**Recommendation:** The tree is one of many significant trees on site that are worthy of protection. The university is undertaking a Management Plan that will apply management and protection measures to all the trees on the site.

**Management:** \*Improve tree vigour and longevity by placing mulch 75mm deep below the tree to 7m from the trunk.

**Assessor:** S. Slaytor

**Referee:** Ron Hatelly

**Tree No:** 16 (Nominated tree# 6)

**Address:** University of Melbourne, School of Forestry & Ecosystem Science, Creswick

**PS Map No:** 23VPO

**Lat/longitude:** S37.423122 E143.899612

**Survey Date:** 5 Sept 2011

**Botanical Name:** *Eucalyptus leucoxylon*

**Common Name:** Yellow Gum

**Location:** 15m west of science block

**No. of trees:** 1

**Height:** 7

**Canopy Spread (m)** E-W: 3 N-S: 4

**Girth / DBH:** 200mm

**Approx. Age of Tree:** 38yr

**Vigour / condition:** Fair / fair

**Owner / access:** Private / restricted

**Planning Status:** HO 20. Tree controls do not apply

**Significance Category:** 8 (6) Historical value – British royalty

**What is significant:** The Yellow Gum planted in the School of Forestry grounds.

**How is it significant:** The Yellow Gum is significant for historic reasons at a local level.

**Why is it significant:** The tree is a commonly planted species but this specimen was planted by HRH Prince Charles in 1974.

**Recommendation:** The tree is one of many significant trees on site that are worthy of protection. The university is undertaking a Management Plan that will apply management and protection measures to all the trees on the site.

**Management:** The vigour and form of this tree is affected by the proximity of the dominant tree to its north, which also displays superior form.

**Assessor:** S. Slaytor **Referee:** Ron Hatelly

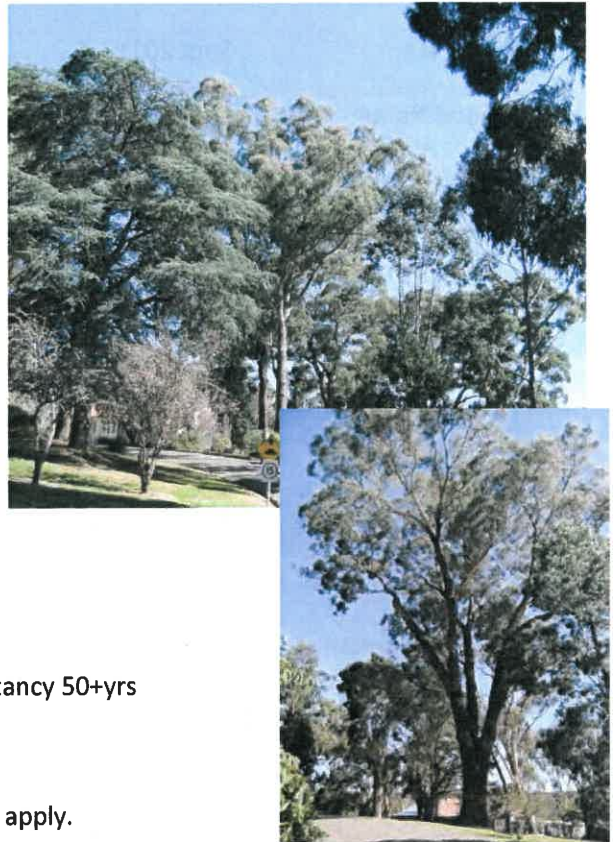




<b>Tree No:</b>	<b>17</b> (Nominated tree# 7)
<b>Address:</b>	University of Melbourne, School of Forestry & Ecosystem Science, Creswick
<b>PS Map No:</b>	23VPO
<b>Lat/longitude:</b>	S37.423506 E143.898132
<b>Survey Date:</b>	5 Sept 2011
<b>Botanical Name:</b>	<i>Ulmus minor</i> subsp. <i>sarniensis</i>
<b>Common Name:</b>	Jersey Elm
<b>Location:</b>	Among group of trees opposite intersection Uni Dve & Rogers St
<b>No. of trees:</b>	1
<b>Height:</b>	8
<b>Canopy Spread (m)</b>	<b>E-W:</b> 9 <b>N-S:</b> 8
<b>Girth / DBH:</b>	1.2m / 380mm
<b>Approx. Age of Tree:</b>	90yr?
<b>Vigour / condition:</b>	Fair / fair; life expectancy 15+yrs
<b>Owner / access:</b>	Private / restricted
<b>Planning status:</b>	HO 20. Tree controls do not apply.
<b>Significance Category:</b>	2 (2) Historic site, 2 (7) Context, 3 (3) Rare – 1 to 10 known specimens
<b>What is significant:</b>	The Jersey Elm planted in the School of Forestry grounds.
<b>How is it significant:</b>	The Jersey Elm is significant for historic, social and scientific reasons at a State level.
<b>Why is it significant:</b>	The tree is very rare in the State of Victoria; other known examples occur at Castlemaine Botanic Gardens (National Trust T11457), Kyneton Botanic Gardens and Moss Vale Park. The tree contributes to the historic, social and aesthetic values of the site which has operated as a forestry education centre for over 100 years.
<b>Recommendation:</b>	The tree is one of many significant trees on site that are worthy of protection. The university is undertaking a Management Plan that will apply management and protection measures to all the trees on the site.
<b>Management:</b>	The vigour and form of the tree are affected by the proximity of other trees in this area. The tree has sustained some damage and needs pruning to remove hanging branches. Water tree during drought periods.



<b>Tree No:</b>	<b>18</b>	(Nominated tree# 8)
<b>Address:</b>	University of Melbourne, School of Forestry & Ecosystem Science, Creswick	
<b>PS Map No:</b>	23VPO	
<b>Lat/longitude:</b>	S37.421712 E143.899674	
<b>Survey Date:</b>	5 Sept 2011	
<b>Botanical Name:</b>	Eucalyptus melliodora	
<b>Common Name:</b>	Yellow Box	
<b>Location:</b>	Vicinity of 'The Lodge' on Melliodora Drive	
<b>No. of trees:</b>	7	
<b>Height:</b>	to 30	
<b>Canopy Spread (m)</b>	E-W: to 30    N-S: to 30	
<b>Girth / DBH:</b>	to 4.8m / 1530mm	
<b>Approx. Age of Tree:</b>	300yr	
<b>Vigour / condition:</b>	Good / excellent; life expectancy 50+yrs	
<b>Owner / access:</b>	Private / restricted	
<b>Planning status:</b>	HO 20. Tree controls do not apply.	
<b>Significance Category:</b>	2 (2) Historic, 2 (5) Remnant native vegetation, 3 (7) Localised – disjunct community	
<b>What is significant:</b>	The group of Yellow Box retained in the School of Forestry grounds.	
<b>How is it significant:</b>	The Yellow Box trees are significant for aesthetic and scientific reasons.	
<b>Why is it significant:</b>	The trees are scientifically significant as remnant trees which contribute to the ecological values of the area. Yellow Box trees are not commonly found in the Creswick area. The trees contribute to the historic, social and aesthetic values of the site which has operated as a forestry education centre for over 100 years.	
<b>Recommendation:</b>	The tree is one of many significant trees on site that are worthy of protection. The university is undertaking a Management Plan that will apply management and protection measures to all the trees on the site.	
<b>Management:</b>	Engage an Arborist to check stability of two trees located close to banks if this is of concern to property managers.	
<b>Assessor:</b>	S. Slaytor	<b>Referee:</b> Ron Hatelly



<b>Tree No:</b>	<b>23</b> (Nominated tree# 49)
<b>Address:</b>	Albert St, Creswick
<b>PS Map No:</b>	23VPO
<b>Lat/longitude:</b>	S37.428925 E143.893237 to S37.422343 E143.894873
<b>Survey Date:</b>	5 Sept 2011
<b>Botanical Name:</b>	Quercus canariensis, Q. robur Platanus x acerifolius, Ulmus spp.
<b>Common Name:</b>	Algerian Oak, English Oak, London Plane, Elm
<b>Location:</b>	Albert Street from Napier Street to Victoria Street
<b>No. of trees:</b>	~30
<b>Height:</b>	3-16
<b>Canopy Spread (m)</b>	E-W: to 20 N-S: to 20
<b>DBH:</b>	300-650 mm
<b>Approx. Age of Tree:</b>	to 100yr
<b>Vigour / condition:</b>	poor – excellent; life expectancy varies from <5yrs to >40yrs
<b>Owner / access:</b>	Shire of Hepburn / unrestricted
<b>Planning status:</b>	Part covered by HO 823; within HO 823 tree controls apply.
<b>Significance Category:</b>	2 (7) Contribution to landscape, 8 (1) Historic values
<b>What is significant:</b>	Roadside plantings of Oak and Plane trees in the main street of Creswick.
<b>How is it significant:</b>	These trees are significant for historic and aesthetic reasons at a local level.
<b>Why is it significant:</b>	Albert Street is the main thoroughfare of Creswick and a major traffic route. The street trees are important to maintaining the leafy character to the township of Creswick. Some trees in the avenue are old with historic value. The nominated trees are outside of the Creswick central heritage precinct.
<b>Recommendation:</b>	Nominated trees #49 are partly covered by tree controls under HO823. Remaining avenue trees (Nominated trees #49) in Albert Street from Napier Street to Victoria Street outside of HO823 to be added to Significant Tree Register and Vegetation Protection Overlay to be applied .
<b>Management:</b>	Most trees within the existing protection overlay are of poor vigour and condition where there is demand for vehicle parking. Council should prepare a Landscape Master plan addressing re-establishment of avenue. The design should incorporate the use of 'structural soils' in tree vaults that provide conditions suitable for tree root growth and vehicle loadings.
<b>Assessor:</b>	S. Slaytor
<b>Referee:</b>	Valda Caprice (Creswick and District Historical Society)





<b>Tree No:</b>	<b>24</b> (Nominated tree# 50)
<b>Address:</b>	St John's Church, Napier Street, Creswick
<b>PS Map No:</b>	23VPO
<b>Lat/longitude:</b>	S37.426729 E143.891965
<b>Survey Date:</b>	25 July 2011
<b>Botanical Name:</b>	Sequoiadendron giganteum
<b>Common Name:</b>	Sierra Redwood
<b>Location on site:</b>	East entry to St John's Church
<b>No. of trees:</b>	2
<b>Height:</b>	16m (north tree)
<b>Canopy Spread (m)</b>	<b>E-W:</b> 7m <b>N-S:</b> 7m
<b>Girth / DBH:</b>	3.84
<b>Approx. Age of Tree:</b>	130yrs?
<b>Vigour / Condition:</b>	North tree good, south is fair; life expectancy 15yrs to 40yrs+
<b>Owner / access:</b>	Private / restricted
<b>Planning status:</b>	HO 39, no tree controls apply.
<b>Significance Category:</b>	2 (7) Location – contribution to landscape, 8 (1) Historic value
<b>What is significant:</b>	The Sierra Redwood trees growing at the front of St John's Church.
<b>How is it significant:</b>	The trees are significant for historic and aesthetic reasons on a local level.
<b>Why is it significant:</b>	The Redwoods are a prominent part of the historic bluestone church building and flank the entry. The trees contribute to the landscape aesthetics.
<b>Recommendation:</b>	Nominated Tree #50 to be added to the Significant Tree Register and Vegetation Protection Overlay to be applied.
<b>Management:</b>	The south tree has reduced vigour but the north tree (pictured above) has good vigour and form. Replacing turf with mulch may improve soil conditions and tree health.
<b>Assessor:</b> S. Slaytor	<b>Referee:</b> Valda Caprice (Creswick and District Historical Society)



<b>Tree No:</b>	<b>26</b> (Nominated tree# 63)
<b>Address:</b>	64 Napier Street, Creswick
<b>PS Map No:</b>	23VPO
<b>Lat/longitude:</b>	S37.424004 E143.892695
<b>Survey Date:</b>	25 July 2011
<b>Botanical Name:</b>	<i>Quercus canariensis</i>
<b>Common Name:</b>	Algerian Oak
<b>Location on site:</b>	SE corner (at rear)
<b>No. of trees:</b>	1
<b>Height:</b>	26m
<b>Canopy Spread (m)</b>	E-W: 20m N-S: 20m
<b>Girth / DBH:</b>	4.17m / 1330mm
<b>Approx. Age of Tree:</b>	120yrs
<b>Vigour / Condition:</b>	Excellent / excellent; life expectancy 50yrs+
<b>Owner / access:</b>	Private / restricted
<b>Planning status:</b>	Adjacent overlays HO 30 & HO 825, opposite HO 259
<b>Significance Category:</b>	2 (7) Location – contribution to landscape, 8 (1) Historic, 10 (1) Outstanding example of species
<b>What is significant:</b>	The Algerian Oak growing at the end of the driveway at Napier Street in Creswick.
<b>How is it significant:</b>	The tree is significant for aesthetic, historic and scientific reasons on a local level.
<b>Why is it significant:</b>	The Oak displays excellent vigour and form; it is a very large semi-deciduous tree that contributes to the landscape character and aesthetics. The Oak would have been associated with the old stables to its south which are now on a separate title.
<b>Recommendation:</b>	Nominated tree # 63 to be added to the Significant Tree Register and Vegetation Protection Overlay to be applied.
<b>Management:</b>	The protection zone of this tree extends into adjoining properties so development on these lots needs to maintain a setback of 15 metres or be undertaken in a manner that does not damage the tree.
<b>Assessor:</b>	S. Slaytor
<b>Referee:</b>	Valda Caprice



**Tree No:** 27 (Nominated tree# 64)

**Address:** 64 Napier Street, Creswick

**PS Map No:** 23VPO

**Lat/longitude:** S37.423851 E143.892687

**Survey Date:** 25 July 2011

**Botanical Name:** *Aesculus hippocastanum*

**Common Name:** Horse Chestnut

**Location on site:** East boundary near NE corner (behind shed)

**No. of trees:** 1

**Height:** 14m

**Canopy Spread (m):** 12 to 15m

**Girth / DBH:** 2.36m / 750mm

**Approx. Age of Tree:** 120yrs

**Vigour / Condition:** Good / good; life expectancy 20yrs+

**Owner / access:** Private / restricted

**Planning status:** Adjacent overlays HO 30 & HO 825, opposite HO 259



**Significance Category:** 2 (7) Location – contribution to landscape, 8 (1) Historic value

**What is significant:** The Horse Chestnut growing nears the boundary at the NE area of the property.

**How is it significant:** The tree is significant for historic and aesthetic reasons at a local level.

**Why is it significant:** The Horse Chestnut is not commonly planted. This tree displays good vigour and form; it is a deciduous tree that contributes to the character and aesthetics of the landscape.

**Recommendation:** Nominated tree # 64 to be added to the Significant Tree Register and Vegetation Protection Overlay to be applied.

**Management :** Avoid soil disturbance within 9 metres of the trunk. Two smaller Horse Chestnuts are located in the adjoining property to the east.

**Assessor:** S. Slaytor **Referee:** Valda Caprice



<b>Tree No:</b>	29 (Nominated tree# 66)
<b>Address:</b>	15 St Georges Lake Road, Creswick
<b>PS Map No:</b>	24VPO
<b>Lat/longitude:</b>	S 37.428680 E 144.902729
<b>Survey Date:</b>	25 July 2011
<b>Botanical Name:</b>	Eucalyptus dives
<b>Common Name:</b>	Broad-leaved Peppermint
<b>Location:</b>	50 metres left from driveway
<b>No. of trees:</b>	1
<b>Height:</b>	23
<b>Canopy Spread (m)</b>	E-W: 20 N-S: 16
<b>Girth / DBH:</b>	3.87m / 1230mm
<b>Approx. Age of Tree:</b>	200yr
<b>Vigour / condition:</b>	Good / fair; life expectancy 20+yrs
<b>Owner / access:</b>	Private / restricted
<b>Planning Status:</b>	None
<b>Significance Category:</b>	2 (5) Remnant native vegetation, 4 (1) Particularly old
<b>What is significant:</b>	The large remnant Broad-leaved Peppermint retained at 15 St Georges Lake Road, Creswick.
<b>How is it significant:</b>	The Broad-leaved Peppermint is significant for historic, aesthetic and scientific reasons at a local level.
<b>Why is it significant:</b>	The tree is scientifically significant as an old remnant tree and contributes to the ecological values of the local vegetation. The tree is prominently large and contributes to the bushland character. Much of the tree cover in this part of Creswick consists of plantation timber so areas of natural bushland are uncommon.
<b>Recommendation:</b>	The Nominated tree #66 to be added to the Significant Tree Register and Vegetation Protection Overlay to be applied.
<b>Management:</b>	No issues noted. Avoid changes within tree protection zone from trunk to 5m past canopy edge.
<b>Assessor:</b>	S. Slaytor
<b>Referee:</b>	Julie Harris



<b>Tree No:</b>	<b>30</b> (Nominated tree# 30)
<b>Address:</b>	131 Napier Street, Creswick
<b>PS Map No:</b>	23VPO
<b>Lat/longitude:</b>	S37.429040 E143.892293
<b>Survey Date:</b>	25 July 2011
<b>Botanical Name:</b>	Magnolia grandiflora
<b>Common Name:</b>	Bull Bay Magnolia
<b>Location on site:</b>	Front of cottage
<b>No. of trees:</b>	1
<b>Height:</b>	7m
<b>Canopy Spread (m):</b>	8m
<b>Girth / DBH:</b>	1.5 m / 480mm
<b>Approx. Age of Tree:</b>	100yrs?
<b>Vigour / Condition:</b>	Good / good; life expectancy 30yrs+
<b>Owner / access:</b>	Private / restricted
<b>Planning status:</b>	HO 813, tree controls do not apply
<b>Significance Category:</b>	2 (7) Location/Context – contribution to landscape, 8 (1) Historic value
<b>What is significant:</b>	The Magnolia tree growing at the front of the cottage.
<b>How is it significant:</b>	The tree is significant for historic and aesthetic reasons on a local level.
<b>Why is it significant:</b>	The Magnolia probably dates from the time the historic cottage was established on the property. The tree complements the scale of the cottage. The cool climate and soil conditions have reduced its rate of growth – the Bull Bay Magnolia is normally a much larger tree when it has reached this age.
<b>Recommendation:</b>	Nominated Tree #30 to be added to the Significant Tree Register and Vegetation Protection Overlay to be applied.
<b>Management:</b>	Avoid soil disturbance within 6 metres of the trunk; Magnolia trees have shallow root systems so supplementary watering during dry periods will be beneficial.
<b>Assessor:</b> S. Slaytor	<b>Referee:</b> Geoff and Frances Fadiman



**Tree No:** 31 (Nominated tree# 43)

**Address:** 1 Bellbird Lane, Daylesford

**PS Map No:** 31VPO

**Lat/longitude:** S37.20.609 E144.08.307 (WGS84)

**Survey Date:** 27 June 2011

**Botanical Name:** Quercus robur

**Common Name:** English Oak

**Location on site:** South side of driveway

**No. of trees:** 1

**Height:** 15

**Canopy Spread (m)** E-W: 12 N-S: 12

**Girth / DBH:** 3 stems: 600, 500 & 350mm

**Approx. Age of Tree:** 100yrs?

**Vigour / Condition:** Good / fair; life expectancy 40yrs+

**Owner / access:** Private / restricted

**Planning status:** Neighbourhood Character Overlay

**Significance Category:** 2(7) Context, 8 (1) Historic value

**What is significant:** The Oak tree growing within the frontage of 1 Bellbird Lane, Daylesford.

**How is it significant:** The English Oak is significant for aesthetic and historic reasons at a local level.

**Why is it significant:** The Oak is relatively small in size but is in scale with the quaint cottage and laneway location. Deciduous tree species are a feature of the district and the tree contributes to the character of the neighbourhood.

**Recommendation:** Nominated tree # 43 to be added to the Significant Tree Register and Vegetation Protection Overlay to be applied.

**Management:** Tree may require minor pruning to provide adequate overhead clearance for vehicles using the laneway, noting traffic volume is very low. All pruning it to meet with Australian Standard AS 4373-2006 *Pruning of amenity trees*.

**Assessor:** S. Slaytor **Referee:** Robert Kearsley



**Tree No:** 32 (Nominated tree# 44)

**Address:** 31 Stanbridge Street, Daylesford

**PS Map No:** 33VPO

**Lat/longitude:** S37.346198 E144.150407

**Survey Date:** 29 June 2011

**Botanical Name:** *Castanea sativa*

**Common Name:** Sweet Chestnut

**Location on site:** Boundary with 12 Stanhope St

**No. of trees:** 3

**Height:** 10-12m

**Canopy Spread (m)** 15-18m

**Girth / DBH:** 3.4-3.95m / 1070-1250mm

**Approx. Age of Tree:** 120yrs

**Vigour / Condition:** Fair-good / fair-good; life expectancy 15yr to 40yrs+

**Owner / access:** Private / restricted

**Planning status:** Neighbourhood Character Overlay

**Significance Category:** 2 (7) Location – contribution to landscape, 8 (1) Historic value



**What is significant:** The three Sweet Chestnuts at the northeast area of the property, in addition to other mature exotic trees in the garden.

**How is it significant:** The trees are significant for historic and aesthetic reasons on a local level.

**Why is it significant:** The Chestnut trees are part of the original plantings in this large old garden. They contribute to the amenity of the local area. This species is a feature of the Daylesford area and thrives in the deep moist soils and cool temperate climate. The garden contains some unusual mature trees such as Monkey Puzzle *Araucaria arcana* and Copper Beech *Fagus sylvatica* 'Purpure', established Walnuts, fruit trees and Rhododendrons. The Monkey Puzzle is said to be the parent of the tree in the Wombat Hill Botanic Gardens.

**Recommendation:** Add all mature exotic trees and the garden (the property) at 31 Stanbridge Street to the Significant Tree Register and Vegetation Protection Overlay to be applied.

**Management:** One Chestnut affected by drought has suffered dieback and the canopy has been reduced which has disfigured its form. Reduction pruning of branches overhanging the neighbouring property does not meet modern arboricultural standards. Comply with AS4373 *Pruning of amenity trees*.

**Assessor:** S. Slaytor **Referee:** David Marshall



**Tree No:** 33 (Nominated tree# 57)

**Address:** 68B East Street, Daylesford

**PS Map No:** 33VPO

**Lat/longitude:** S37.350582 E144.153441

**Survey Date:** 29 June 2011

**Botanical Name:** *Castanea sativa*

**Common Name:** Sweet Chestnut

**Location on site:** SE corner near shared boundaries

**No. of trees:** 1

**Height:** 18

**Canopy Spread (m)** E-W: 20 N-S: 19



**Girth / DBH:** 8m girth

**Approx. Age of Tree:** 100yr

**Vigour / Condition:** Good / fair; life expectancy 20yrs

**Owner / access:** Private / restricted

**Planning status:** None

**Significance Category:** 7 (1) Curious growth form, 5 (6) Size of spread & girth, 8 (1) Historic value

**What is significant:** A Sweet Chestnut located in the southeast corner of the lot.



**How is it significant:** The Sweet Chestnut is significant for historic and scientific reasons at a local level.

**Why is it significant:** The species grows well in this area because of the deep red soils and cool moist climate. Some notable trees are planted on the Midland Highway at the front of Wombat Park. This tree has an unusual growth habit with large lateral limbs. The tree is deciduous and has an unusually large girth and canopy spread. It is visually prominent in the local landscape.

**Recommendation:** Nominated tree #57 requires further structural assessment. To be considered in a future planning scheme amendment..

**Management:** The tree has sustained previous branch failures. The structural integrity of the tree is compromised by weight loadings caused by its broad canopy.

**Assessor:** S. Slaytor **Referee:** Helga Hart

Tree No:	34 (Nominated tree# 69)	
Address:	Daylesford Victoria Caravan Park	
PS Map No:	32VPO	
Lat/longitude:	S37.356965 E144.136870	
Survey Date:	29 June 2011	
Botanical Name:	Sequoiadendron giganteum	
Common Name:	Sierra Redwood	
Location on site:	NW area of park	
No. of trees:	4	
Height:	30-32m	
Canopy Spread (m)	14 to 18m	
Girth / DBH:	5.9 to 7.7m	
Approx. Age of Tree:	100yrs	
Vigour / Condition:	Excellent / excellent; life expectancy 40yrs+	
Owner / access:	Private / restricted	
Planning status:	None	
Significance Category:	2 (7) Location – contribution to landscape, 8 (1) Historic value, 10 (1) Outstanding example of species	
What is significant:	Four Sierra Redwood trees within the Daylesford Victoria Caravan Park.	
How is it significant:	The trees are significant for aesthetic, historic and scientific reasons on a local level.	
Why is it significant:	The four Sierra Redwood trees display perfect symmetry and the large, distinctive canopies contribute to the landscape. These tall trees are prominent on the skyline when driving south from Daylesford. The National Trust has listed a Sierra Redwood in the adjoining Victoria Park.	
Recommendation:	Nominated trees # 69 to be added to the Significant Tree Register and Vegetation Protection Overlay to be applied.	
Comments:	Avoid trenching and soil disturbance within the area extending from the trunk to 5 metres beyond the canopy edge.	
Assessor: S. Slaytor	Referee: Allan Meers	





**Tree No:** 35 (Nominated tree# 3 & 42)  
**Address:** Roadside - <sup>Green Cuts</sup> Torpys Road, Glenlyon  
**PS Map No:** 17VPO  
**Lat/longitude:** S 37.286585 E 144.228559 to S37.288377 E144.229352  
**Survey Date:** 13 July 2011  
**Botanical Name:** Eucalyptus melliodora  
**Common Name:** Yellow Box  
**Location:** Roadside  
**No. of trees:** Natural stand ~ 50  
**Height:** 12-18  
**Canopy Spread (m):** 12 to 20m  
**DBH:** 400-700mm  
**Approx. Age of Tree:** 60+yr  
**Vigour / condition:** Excellent / good with expected lifespan of 50yrs+  
**Owner / access:** Shire or Hepburn / unrestricted  
**Planning Status:** None  
**Significance Category:** 2 (7) Contribution to landscape, 3 (1) Localised



**What is significant:** The stand of Yellow Box trees on the Torpys Road verge northwest of Glenlyon.  
**How is it significant:** The stand of Yellow Box trees is significant for aesthetic and scientific reasons at a local level.  
**Why is it significant:** Yellow Box is not an uncommon species in Victoria but is infrequent in the Central Highlands. There are no other stands of Yellow Box in the area. The trees are aesthetically pleasing with cinnamon-coloured flaking bark and a dense crown of fine bluish-tinged foliage.  
**Recommendation:** Nomination #3/42 which is a natural stand of Yellow Box forming an avenue in the Torpys Road verge to be included in the Significant Tree Register and Vegetation Protection Overlay to be applied to this stand of vegetation.  
**Management:** Minor road with no overhead services. No major issues.  
**Assessor:** S. Slaytor **Referee:** Galena Debney

**Tree No:** 36 (Nominated tree# 60)

**Address:** Barkly Street, Glenlyon

**PS Map No:** 17HO

**Lat/longitude:** S37.294376 E144.244899

**Survey Date:** 19 July 2011

**Botanical Name:** Ulmus procera / U x hollandica

**Common Name:** English / Dutch Elm

**Location on site:** Street trees between Molesworth Street and the general store

**No. of trees:** 21

**Height:** to 18m

**Canopy Spread (m):** to 18m

**DBH:** to 2.85m / 950mm

**Approx. Age of Tree:** 120yrs+

**Vigour / Condition:** Fair / fair; life expectancy 5 to 20yrs

**Owner / access:** Shire of Hepburn / unrestricted

**Planning status:** None



**Significance Category:** 2 (7) Location – contribution to landscape, 6 (1) Aesthetic, 8 (1) Historic

**What is significant:** The Elms planted with Oaks on Barkly Street that form an avenue.

**How is it significant:** The trees are significant for historic and aesthetic reasons on a local and possibly State level.

**Why is it significant:** The Elms have been planted in an alternating pattern with English Oaks which is unique. The trees were grown in the Macedon State Nursery and donated to the town in 1898. These deciduous trees are suited to the cool temperate climate and the avenue defines the town's main street.

**Recommendation:** Nominated trees # 60 & 61 to be included on the Significant Tree Register and listed in the schedule to the Heritage Overlay with tree controls included in the Schedule. The avenue planting may have State significance because of the unusual planting pattern.

**Management:** The Elms will have a shorter life expectancy than the Oaks because they are comparatively less tolerant of drought and more prone to decay from poor pruning and limb failure. Most of the Elm trees have been pruned to remove peripheral dieback that was probably caused by drought. There are some issues with roots affecting the rock lining of the open table drains. Soil compaction from vehicle parking near the store is affecting the vigour of trees in this area. Within approximately 10 years Council should initiate the staged replacement of selected Elms to ensure the future amenity and integrity of the avenue.

**Assessor:** S. Slaytor **Referee:** Anne Dobbs

<b>Tree No:</b>	<b>37</b> (Nominated tree#61)
<b>Address:</b>	Barkly Street, Glenlyon
<b>PS Map No:</b>	17HO
<b>Lat/longitude:</b>	S37.296166 E144.244620
<b>Survey Date:</b>	19 July 2011
<b>Botanical Name:</b>	Quercus robur
<b>Common Name:</b>	English Oak
<b>Location on site:</b>	Street trees between Molesworth Street and the general store
<b>No. of trees:</b>	to 18
<b>Height:</b>	to 18m
<b>Canopy Spread (m):</b>	24m
<b>DBH:</b>	to 3.52m / 1120mm
<b>Approx. Age of Tree:</b>	120yrs+
<b>Vigour / Condition:</b>	Good / good; life expectancy 40yrs+
<b>Owner / access:</b>	Shire of Hepburn / unrestricted
<b>Planning status:</b>	None
<b>Significance Category:</b>	2 (7) Location – contribution to landscape, 6 (1) Aesthetic, 8 (1) Historic
<b>What is significant:</b>	The English Oaks planted with Elms on Barkly Street that form an avenue.
<b>How is it significant:</b>	The trees are significant for historic and aesthetic reasons on a local and possibly State level.
<b>Why is it significant:</b>	The English Oaks have been planted in an alternating pattern with Elms which is unique. The trees were grown in the Macedon State Nursery and donated to the town in 1898. These deciduous trees are suited to the cool temperate climate and the avenue defines the town's main street.
<b>Recommendation:</b>	Nominated trees # 60 & 61 to be included on the Significant Tree Register and listed in the schedule to the Heritage Overlay with tree controls included in the Schedule. The avenue planting may have State significance because of the unusual planting pattern.
<b>Management:</b>	The Oaks display better vigour and resilience than the Elms. To maintain the important integrity of the planting design Council needs to plan a replacement program for the Elms because several of the trees are in poor condition.
<b>Assessor:</b> S. Slaytor	<b>Referee:</b> Anne Dobbs



**Tree No:** 38 (Nominated tree# 62)  
**Address:** Barkly Street, Glenlyon  
**PS Map No:** 17VPO  
**Lat/longitude:** S37.295133 E144.244866  
**Survey Date:** 19 July 2011  
**Botanical Name:** Quercus canariensis  
**Common Name:** Algerian Oak  
**Location on site:** Street tree corner Morton Street



**No. of trees:** 1  
**Height:** 8m  
**Canopy Spread (m):** 12m  
**DBH:** 1.6m / 510mm  
**Approx. Age of Tree:** 40yrs?  
**Vigour / Condition:** Good / good; life expectancy 50yrs+  
**Owner / access:** Shire of Hepburn / unrestricted  
**Planning status:** None

**Significance Category:** 2 (7) Location – contribution to landscape, 8 (1) Historic value

**What is significant:** The Algerian Oak planted on Barkly Street (a replacement avenue tree).

**How is it significant:** The tree is significant for aesthetic and socially historic reasons although it is inconsistent with the original avenue planting scheme.

**Why is it significant:** The Algerian Oak contributes to the streetscape but is of a differing species and therefore diminishes the original planting plan. This tree was grown from one of the acorns collected by concerned residents after mature Algerian Oaks were removed from St Pauls Catholic Church in Glenlyon. Members of the community support the replacement of avenue Elm trees with Algerian Oaks grown from these acorns.

**Recommendation:** Nominated tree #62 to be added to the Significant Tree Register and Vegetation Protection Overlay to be applied.

**Management:** The Algerian Oak will develop into a feature of the street planting; however it is inconsistent with the established species. It is semi-deciduous unlike the other trees in the street. Although the tree should be replaced to restore the integrity of the original planting scheme it has merit because of its local history. Elm trees are more susceptible than Oaks to drought, pests and diseases; Council also needs to consider this when planning for the replacement of declining Elms.

**Assessor:** S. Slaytor **Referee:** Anne Dobbs



<b>Tree No:</b>	<b>40</b> (Nominated tree# 32)
<b>Address:</b>	45 Rothes Road, Little Hampton
<b>PS Map No:</b>	38VPO
<b>Lat/longitude:</b>	S 37.355405 E144.289863
<b>Survey Date:</b>	13 July 2011
<b>Botanical Name:</b>	<i>Eucalyptus viminalis</i>
<b>Common Name:</b>	Manna Gum
<b>Location:</b>	45 Rothes Rd in verge
<b>No. of trees:</b>	1
<b>Height:</b>	28
<b>Canopy Spread (m)</b>	E-W: 35 N-S: 37
<b>Girth:</b>	12.4m
<b>Approx. Age of Tree:</b>	200yr
<b>Vigour / condition:</b>	Good / good; life expectancy 40yrs+
<b>Owner / access:</b>	Shire of Hepburn / unrestricted
<b>Planning status:</b>	None; VPO is south in Little Hampton - Spring Hill Road
<b>Significance Category:</b>	2 (5,7) Remnant native vegetation & contribution to landscape, 5 (6) Outstanding spread & girth
<b>What is significant:</b>	The Manna Gum outside 45 Rothes Road.
<b>How is it significant:</b>	The Manna Gum is significant for scientific, social and aesthetic reasons at a local level.
<b>Why is it significant:</b>	The tree is visually prominent because of its immense size. It is a large remnant tree of good form and vigour. Remnant trees are limited to the roadside areas in this area because of clearing for farming activities. The Manna Gum contributes to the ecological and aesthetic values of the roadside vegetation. Manna from this tree was eaten by local children.
<b>Recommendation:</b>	Nominated tree #32 to be added to the Significant Tree Register and Vegetation Protection Overlay to be applied.
<b>Management:</b>	A Vegetation Protection Overlay applies to the vegetated roadside area south of this tree; trees in Rothes Road are more scattered but are still significant as they provide 'islands' for wildlife moving between vegetated zones. A sign has been recently nailed to the trunk and should be removed. Avoid disturbance within 12 x trunk diameter of trees in verges.
<b>Assessor:</b>	S. Slaytor
<b>Referee:</b>	Bruce McKenzie





**Tree No:** 41 (Nominated tree# 33)

**Address:** Bridge Road / Reed Track,  
Little Hampton

**PS Map No:** 37VPO

**Lat/longitude:** S37.19.951 E144.15.645 (WGS84)

**Survey Date:** 21 July 2011

**Botanical Name:** *Eucalyptus viminalis*

**Common Name:** Manna Gum

**Location:** ~ 50 metres west of Bridge Road  
and ~150m south of Reed Track

**No. of trees:** 1

**Height:** 40 metres

**Canopy Spread (m)** E-W: 20 N-S: 20

**Girth / DBH:** 5.85m

**Approx. Age of Tree:** 300yr

**Vigour / condition:** Good / fair; life expectancy 40+yrs

**Owner / access:** DSE / unrestricted

**Planning status:** HO 978 in vicinity, PCRZ zoning

**Significance Category:** 2 (5) Remnant native vegetation, 4 (1) Particularly old, 5 (2) Outstanding height

**What is significant:** The large remnant Manna Gum retained in the Wombat State Forest.

**How is it significant:** The Manna Gum is significant for historic, aesthetic and scientific reasons at a local level.

**Why is it significant:** The tree is scientifically significant as an old remnant tree which contains large habitat hollows and contributes to the ecological values of the local vegetation. It is possibly the tallest tree in the Wombat Forest.

**Recommendation:** The tree is located within a Special Protection Zone within the Wombat State Forest. DELWP advises its internal processes provide adequate tree protection through legislation.

**Management:** The main risk to the tree is from fire. Prior to commencing a prescribed hazard reduction burn the area below this tree should have fuel loadings removed to avoid fire damaging the tree.



<b>Tree No:</b>	<b>42</b> (Nominated tree# 27)
<b>Address:</b>	Justices Road, Little Hampton
<b>Lat/longitude:</b>	S 37.360259 E144.292478
<b>Survey Date:</b>	13 July 2011
<b>Botanical Name:</b>	<i>Eucalyptus viminalis</i>
<b>Common Name:</b>	Manna Gum
<b>Location:</b>	Justices Rd verge ~200m south of Springhill Rd
<b>No. of trees:</b>	1
<b>Height:</b>	20
<b>Canopy Spread (m)</b>	E-W: 15 N-S: 15
<b>Girth:</b>	7.9m
<b>Approx. Age of Tree:</b>	200yr
<b>Vigour / condition:</b>	Good / good; life expectancy 25yr+
<b>Owner / access:</b>	Shire of Hepburn / unrestricted
<b>Planning status:</b>	HO 833 in vicinity; Existing Vegetation Protection Overlay
<b>Significance Category:</b>	2 (5) Remnant native vegetation
<b>What is significant:</b>	The Manna Gum in the Justices Road verge adjacent to the former Little Hampton school.
<b>How is it significant:</b>	The Manna Gum is significant for scientific and aesthetic reasons at a local level.
<b>Why is it significant:</b>	The tree contributes to the ecological and aesthetic values of the roadside vegetation. The Manna Gum is a large remnant tree which has been preserved in the road reserve. Remnant trees are limited to the roadside areas in this area because of clearing for farming activities.
<b>Recommendation:</b>	Nominated tree #27 is currently protected by the Vegetation Protection Overlay. It is recommended that the existing VPO be retained.
<b>Comments:</b>	The main threat to protected roadside vegetation in nearby areas covered by the VPO is from stock grazing within the road reserve; there is a risk that stock may partially ringbark trees if grazed for an extended period.
<b>Assessor:</b>	S. Slaytor
<b>Referee:</b>	Trentham and District Historical Society



**Tree No:** 43 (Nominated tree# 41)

**Address:** Roadside – Kearneys & Roaches Roads

**PS Map No:** 45VPO

**Lat/longitude:** S 35.24.950 E 144.14.977 (WGS84)

**Survey Date:** 13 July 2011

**Botanical Name:** *Eucalyptus brookeriana*

**Common Name:** Brookers Gum

**Location:** Roadside

**No. of trees:** Natural stand - localised

**Height:** 25m

**Canopy Spread (m):** 8 to 12m

**DBH:** 250-500mm

**Approx. Age of Tree:** 60+yr

**Vigour / condition:** Excellent / good; life expectancy 40+yrs

**Owner / access:** Shire or Hepburn / unrestricted

**Planning status:** None

**Significance Category:** 2 (7) Contribution to landscape, 3 (1) Localised

**What is significant:** The stand of Brookers Gum trees in the verge of Roaches Road near Kearneys Roads at Lyonville South.

**How is it significant:** The stand of Brookers Gum trees is significant for aesthetic and scientific reasons at a local and possibly State level.

**Why is it significant:** The occurrence of Brookers Gum in Victoria is limited to a small area near the Bullarto Plateau so it has scientific significance for its rarity within Victoria. The species is also endemic to Tasmania where it is more widespread. The trees are aesthetically pleasing and are growing in association with Swamp Gum *Eucalyptus ovata*.

**Recommendation:** Nominated trees # 41 to be added to the Significant Tree Register and Vegetation Protection Overlay to be applied to this stand of vegetation.

**Management:** Electrical conductors have been placed underground in this area to minimise impact on the trees.

**Assessor:** S. Slaytor **Referee:** Trentham and District Historical Society





**Tree No:** 44 (Nominated tree# 34)

**Address:** 10 Donald Lane, Newbury

**PS Map No:** 46VPO

**Lat/longitude:** S 37.408981 E144.289402

**Survey Date:** 19 July 2011

**Botanical Name:** *Castanea sativa*

**Common Name:** Sweet Chestnut

**Location:** Front yard

**No. of trees:** 1

**Height:** 18

**Canopy Spread (m)** E-W: 20 N-S: 30

**Girth:** 30 stems 200-480mm diameter

**Approx. Age of Tree:** 130yr

**Vigour / condition:** Good / good; life expectancy 50+yrs

**Owner / access:** Private / restricted

**Planning status:** None

**Significance Category:** 5 (1) Outstanding size, 6(1) Aesthetic, 7 (5) Curious growth form, 8 (1) Historic values

**What is significant:** The Sweet Chestnut growing in the front yard of the property.

**How is it significant:** The Chestnut is significant for scientific, historic and aesthetic reasons at a local level.

**Why is it significant:** The Sweet Chestnut has an unusual growth form caused by the outward failure of several main stems from its root crown. This event occurred decades ago and many vertical stems have developed which makes this tree appear to be a copse of trees. The tree is thought to have been planted in the 1860s when the original cottage was constructed. The tree is growing on a knoll and is complemented by plantings of spring bulbs beneath its canopy. The garden is occasionally opened to the public.

**Recommendation:** Nominated tree #34 to be added to the Significant Tree Register and Vegetation Protection Overlay to be applied.

**Management:** Maintain the existing low-impact garden management. Avoid disturbance within the area extending from the trunks to 5 metres past the canopy edge.

**Assessor:** S. Slaytor **Referee:** Vicki Driscoll



<b>Tree No:</b>	<b>45</b> (Nominated tree# 58)
<b>Address:</b>	Ridge Road cnr Appleby Lane, Sailors Hill
<b>Lat/longitude:</b>	S37.363728 E144.127235
<b>PS Map No.</b>	N/A
<b>Survey Date:</b>	24 August 2011
<b>Botanical Name:</b>	Eucalyptus rubida Ulmus & Crataegus spp
<b>Common Name:</b>	Candlebark, Elm & Hawthorn
<b>Location:</b>	Within road verge and on boundary
<b>No. of trees:</b>	20 Gums, others in copse/hedgerow
<b>Height:</b>	4 to 25m
<b>Canopy Spread (m):</b>	To 18m (gums)
<b>Girth:</b>	To 2.95m/940mm
<b>Approx. Age of Tree:</b>	15 to 80yr
<b>Vigour / condition:</b>	Good / good; life expectancy 30yrs+
<b>Owner / access:</b>	Shire of Hepburn /unrestricted
<b>Planning status:</b>	None.
<b>Significance Category:</b>	2 (7) Location/Context – contribution to landscape, 8 (1) Historic value
<b>What is significant:</b>	The group of native and exotic trees at the corner of Ridge Road and Appleby Lane.
<b>How is it significant:</b>	The trees have minor significance for historic and aesthetic reasons at a local level.
<b>Why is it significant:</b>	The vegetation includes a small remnant stand of an old Hawthorn hedgerow which gives some reference to the old small farms of Sailors Hill.
<b>Recommendation:</b>	The hedgerow remnant is limited in size. There are significant trees on old farms in this area that are more worthy of inclusion on the Significant Tree Register. Not recommended for Significant Tree Register.
<b>Management:</b>	Retain the trees and hedgerow vegetation by maintaining adequate setbacks from future site disturbance.
<b>Assessor:</b> S. Slaytor	<b>Referee:</b> Joscelyn Ratcliffe





**Tree No:** 46 (Nominated tree# 40 & 71)

**Address:** Spring Hill Cemetery, Spring Hill

**PS Map No:** 18VPO

**Lat/longitude:** S 37.300984 E 144.323015

**Survey Date:** 29 August 2011

**Botanical Name:** *Banksia marginata*

**Common Name:** Silver Banksia

**Location:** NW area, 20m SW of Muller grave

**No. of trees:** 1

**Height:** 9

**Canopy Spread (m)** E-W: 8 N-S: 8

**Girth:** 3.2m at base

**Approx. Age of Tree:** 80yr?

**Vigour / condition:** Good / fair; life expectancy 15yr+

**Owner / access:** Cemetery Trust / unrestricted

**Planning status:** None

**Significance Category:** 2 (5) Remnant native vegetation, 3(7) Rare, disjunct, 4(1) Particularly old, 5 (7) Outstanding size

**What is significant:** The remnant Silver Banksia retained in the cemetery grounds.

**How is it significant:** The Silver Banksia is significant for scientific, historic and rarity reasons at a local level.

**Why is it significant:** This tree is particularly old and large. Early records indicate Silver Banksia was once common in Central Victoria but is now rarely seen. It was harvested for firewood in bakers' ovens. This Silver Banksia is scientifically important as a source of seed stock. The specimen has a tree type form, whereas many are shrub-like. Silver Banksia was referred to as 'honeysuckle' and featured in early descriptions of the district. Firewood harvesting caused it to decline.

**Recommendation:** Nominated tree # 40 (71) to be added to the Significant Tree Register and Vegetation Protection Overlay to be applied.

**Management:** The tree is a relatively inaccessible part of the cemetery so it is unlikely to be affected by excavation for future graves. The longevity of the Banksia is threatened by adjacent vegetation - particularly seedling Manna Gums and Blackberry. These should be controlled to reduce competition. There is evidence of recruitment with several young mature Banksias growing nearby. All Banksias on the site are to be protected from damage.

**Assessor:** S. Slaytor

**Referee:** Gael Elliott & Gael Osborne



<b>Tree No:</b>	<b>47</b>	(Nominated tree# 9)
<b>Address:</b>	"Snow Gum Springs" 169 Alcorns Road Springmount	
<b>PS Map No:</b>	24VPO	
<b>Lat/longitude:</b>	S 37.398392 E 143.927615	
<b>Survey Date:</b>	5 Sept 2011	
<b>Botanical Name:</b>	<i>Allocasuarina verticillata</i>	
<b>Common Name:</b>	Drooping Sheoak	
<b>Location:</b>	~300m West of entry on north boundary fence	
<b>No. of trees:</b>	1	
<b>Height:</b>	18	
<b>Canopy Spread (m)</b>	E-W: 7 N-S: 7	
<b>Girth / DBH:</b>	2.6m / 830mm	
<b>Approx. Age of Tree:</b>	200yr?	
<b>Vigour / condition:</b>	Fair / fair; life expectancy 30+yrs (of suckers)	
<b>Owner / access:</b>	Private / restricted	
<b>Planning Status:</b>	None	
<b>Significance Category:</b>	2 (5) Remnant native vegetation, 3(7) Rare, disjunct, 4(1) Particularly old, 5 (7) Outstanding size	
<b>What is significant:</b>	The remnant Drooping Sheoak retained in recent shelterbelt plantings on the north boundary.	
<b>How is it significant:</b>	The Drooping Sheoak is significant for scientific and rarity reasons at a local level.	
<b>Why is it significant:</b>	The Drooping Sheoak is scientifically important as a source of seed stock. This specimen was recorded by Willis (circa 1928) as the only tree in the area; the others being at Mt Beckworth. Firewood harvesting and palatability to grazing stock caused it to decline.	
<b>Recommendation:</b>	Nominated tree #9 to be added to the Significant Tree Register and Vegetation Protection Overlay to be applied.	
<b>Management:</b>	The tree has been fenced from stock. The owners of the property have propagated seed from this tree and these are planted in the shelterbelts. There are also remnant Snow Gums <i>Eucalyptus pauciflora</i> on this property that is also rare in the district.	
<b>Assessor:</b>	S. Slaytor	<b>Referee:</b> Ron Hatelly



**Tree No:** 49 (Nominated tree# 15)

**Address:** 2140 Trentham Falls Road,

**PS Map No:** 38VPO

**Lat/longitude:** S 37.373448 E 144.329388

**Survey Date:** 13 July 2011

**Botanical Name:** *Eucalyptus pauciflora*

**Common Name:** Snow Gum

**Location:** South side Trentham Falls Rd

**No. of trees:** 1

**Height:** 20

**Canopy Spread (m)** E-W: 18 N-S: 18

**Girth / DBH:** 5.3m / 1700mm

**Approx. Age of Tree:** 200yr

**Vigour / condition:** Excellent / excellent; life expectancy 40+yrs

**Owner / access:** Shire of Hepburn / unrestricted

**Planning Status:** None

**Significance Category:** 2 (5) Remnant native vegetation, 3 Rare or localised, 8 (1) Historic value, 10 Outstanding example of species

**What is significant:** The Snow Gum retained at the roadside near 2140 Trentham Falls Road.

**How is it significant:** The Snow Gum is significant for historic, scientific and rarity reasons at a local level.

**Why is it significant:** The Snow Gum is an especially large remnant tree of excellent health and structural form. The tree is scientifically important as a source of seed stock and contributes to the ecological values of the roadside vegetation. Snow Gums are not commonly seen in the Trentham area because they were harvested for firewood that was used in bakers' ovens.

**Recommendation:** Nominated tree #15 to be added to the Significant Tree Register and Vegetation Protection Overlay to be applied.

**Management:** Avoid road widening or soil trenching within would cause root damage; the tree is located at the top of a low bank. Other trees in the roadside contribute to landscape character; this road is a popular tourist route.

**Assessor:** S. Slaytor

**Referee:** Trentham and District Historical Society



**Tree No:** 50 (Nominated tree# 16)

**Address:** 'Brindabella' 1964 Daylesford Road, Trentham (near Enders Bridge)

**PS Map No:** 38VPO

**Lat/longitude:** S37.373120 E144.315763

**Survey Date:** 25 August 2011

**Botanical Name:** Eucalyptus obliqua

**Common Name:** Messmate Stringybark

**Location:** North of access road to sheds

**No. of trees:** 1

**Height:** 35m

**Canopy Spread (m)** E-W: 21m  
N-S: 20m

**Girth:** 9.3m

**Approx. Age of Tree:** 200yr+

**Vigour / condition:** Good / fair-good, life expectancy 20+yrs

**Owner / access:** Private / restricted

**Planning status:** HO 874 nearby

**Significance Category:** 5 (1) Outstanding size, 6(1) Aesthetic, Remnant, 8 (1) Historic value



**What is significant:** The Messmate located on the west side of Coliban River at Enders Bridge.

**How is it significant:** The Messmate is significant for scientific, historic and aesthetic reasons at a local level.

**Why is it significant:** The tree is very old and large in girth. It is a remnant of the original vegetation and contributes to the aesthetic values of the district. The tree appears in old images of Enders Bridge. Mr Ender established a steam-powered sawmill at the site.

**Recommendation:** Nominated tree #16 to be added to the Significant Tree Register and Vegetation Protection Overlay to be applied.

**Management:** The area near the tree is used for storing round hay bales. The tree indicates good vigour for a tree of this age; the bales are suppressing grass which assists the tree by reducing competition for water and nutrients. The bales may however inhibit gaseous exchange in the soil (therefore affecting root function) and there is a risk that machinery used to move bales will cause soil compaction.

**Assessor:** S. Slaytor **Referee:** Trentham and District Historical Society



**Tree No:** 51 (Nominated tree# 17)

**Address:** 60 Mulcaheys Road, Trentham

**PS Map No:** 39VPO

**Lat/longitude:** S37.386771 E144.311079

**Survey Date:** 21 July 2011

**Botanical Name:** *Eucalyptus obliqua*

**Common Name:** Messmate Stringybark

**Location:** Rear boundary near shed  
access tree from Bligh Street

**No. of trees:** 1

**Height:** 32m

**Canopy Spread (m):** 26m

**Girth:** 8.45m

**Approx. Age of Tree:** 200yr+

**Vigour / condition:** Fair / good, life expectancy 20+yrs

**Owner / access:** Private / restricted

**Planning status:** None

**Significance Category:** 2 (5) Context – remnant native vegetation, 5 (1) Outstanding size, 8 (1) Historic value

**What is significant:** The Messmate located at the rear of the old forestry nursery.

**How is it significant:** The Messmate is significant for scientific and historic reasons at a local level.

**Why is it significant:** The Messmate is an old remnant tree of particularly large size that was spared during the clearing of the Wombat Forest; the tree is a local landmark at the former State Forestry Nursery site.

**Recommendation:** Nominated tree #17 to be added to the Significant Tree Register and Vegetation Protection Overlay to be applied.



**Management:** There are no particular threats; any future works are to maintain a setback that extends to 5 metres past the canopy edge.

**Assessor:** S. Slaytor

**Referee:** Bruce McKenzie





Tree No:	52 (Nominated tree# 18)		
Address:	8 Brien Street, Trentham (near cnr Gleasons and Racecourse Rd)		
PS Map No:	39VPO		
Lat/longitude:	S 37.393333 E144.325177		
Survey Date:	11 July 2011		
Botanical Name:	Pinus radiata		
Common Name:	Monterey Pine		
Location:	NE cnr at rear 8 Brien St		
No. of trees:	1		
Height:	18		
Canopy Spread (m)	E-W: 20 N-S: 27		
Girth:	12.7m		
Approx. Age of Tree:	90yr?		
Vigour / condition:	Good / good; life expectancy 15yrs		
Owner / access:	Private/ restricted		
Planning status:	None		
Significance Category:	2 (7) Contribution to landscape, (6) Outstanding spread & girth		
What is significant:	The large Monterey Pine at the rear of Lot 47 Brien Street, Trentham which has been retained in a recent residential subdivision.		
How is it significant:	The Monterey Pine is significant for scientific and aesthetic reasons.		
Why is it significant:	The tree contributes to the aesthetic values of the local area. The tree is visually prominent because of its immense size. The tree was planted by Evelyn Brown and Gordon Gamble; it was the property of Girty Walters but is now within the South Street subdivision.		
Note:	Since assessment the tree has been severely pruned.		
Recommendation:	Since pruning the tree is no longer significant and the size and species of makes it unsuited to a residential site.		
Management:	A new residence to the west of the tree is on an excavated pad. Some overburden has been placed within the protection zone of the tree and should be removed as it will impede soil water & air movement and affect root function. There is a risk that incremental root loss or disturbance from development in adjoining lots will shorten the life of this tree.		
Assessor:	S. Slaytor	Referee: Bruce McKenzie	

<b>Tree No:</b>	<b>57</b> (Nominated tree# 24)
<b>Address:</b>	Old Police Station at rear 3 Camp Street, Trentham
<b>PS Map No:</b>	38VPO
<b>Lat/longitude:</b>	S37.390590 E144.321722
<b>Survey Date:</b>	11 July 2011
<b>Botanical Name:</b>	<i>Chamaecyparis lawsoniana</i>
<b>Common Name:</b>	Lawson Cypress
<b>Location:</b>	SW corner of site
<b>No. of trees:</b>	1
<b>Height:</b>	9
<b>Canopy Spread (m)</b>	E-W: 8 N-S: 8
<b>DBH:</b>	Several stems 500mm diameter
<b>Approx. Age of Tree:</b>	140yr+
<b>Vigour / condition:</b>	Excellent / good; life expectancy 30+yrs
<b>Owner / access:</b>	DSE / unrestricted
<b>Planning status:</b>	HO 367; tree controls do not apply. The building is listed on the National Trust register (B7106).
<b>Significance Category:</b>	2 (4, 7) Associated with historic landmark, Contribution to landscape
<b>What is significant:</b>	The old Lawson Cypress at the rear of the Old Police Station at Trentham which was established in the 1860s.
<b>How is it significant:</b>	The Lawson Cypress is significant for historic and aesthetic reasons at a local level.
<b>Why is it significant:</b>	The tree was probably planted around the time the Police Station was originally established on the site. The tree is a healthy specimen that contributes to the aesthetic values of the local area.
<b>Recommendation:</b>	Nominated tree #24 to be added to the Significant Tree Register and Vegetation Protection Overlay to be applied.
<b>Management:</b>	In any future works establish a protection zone extending 5m beyond the canopy edge.
<b>Assessor:</b>	S. Slaytor
<b>Referee:</b>	Trentham and District Historical Society



**Tree No:** 58 (Nominated tree# 25)  
**Address:** Transfer station, verge of Blackwood Road, Trentham  
**PS Map No:** 38VPO & 39VPO

**Lat/longitude:** S37.400676 E144.318810

**Survey Date:** 11 July 2011

**Botanical Name:** *Eucalyptus dalrympleana*  
subsp. *dalrympleana*

**Common Name:** Mountain White Gum

**Location:** Roadside

**No. of trees:** Natural stand

**Height:** 25-30

**Canopy Spread (m)** E-W: 8 N-S: 8

**DBH:** 500-700mm

**Approx. Age of Tree:** 80yr

**Vigour / condition:** Good / good; life expectancy 40+yrs

**Owner / access:** Shire or Hepburn / unrestricted

**Planning status:** None

**Significance Category:** 2 (7) Contribution to landscape, 3 (1) Localised

**What is significant:** The stand of Mountain White Gum trees on the roadside near the Transfer Station on Blackwood Road, Trentham.

**How is it significant:** The stand of trees is significant for aesthetic and scientific reasons at a local level.

**Why is it significant:** The Mountain White Gum trees flanking the Blackwood Road are aesthetically pleasing and line the main entry to the south side of the township. This species is more widely distributed in eastern Victoria; its western range is in a narrow band that extends as far as Daylesford.

**Recommendation:** Nominated trees #25 to be added to the Significant Tree Register and Vegetation Protection Overlay to be applied to this stand of vegetation.

**Management:** There are few anticipated risks to the trees other than future road widening or service installation. The trees are growing in association with other species such as Manna Gum *Eucalyptus viminalis*.

**Assessor:** S. Slaytor

**Referee:** Trentham and District Historical Society



**Tree No:** 59 (Nominated tree# 26)

**Address:** Apex Park, Market St. Trentham

**PS Map No:** 39VPO

**Lat/longitude:** S37.389987 E144.323171

**Survey Date:** 9 July 2011

**Botanical Name:** *Acer saccharum*

**Common Name:** Sugar Maple

**Location on site:** West of pool

**No. of trees:** 1

**Height:** 14

**Canopy Spread (m)** E-W: 10 N-S: 12

**Girth / DBH:** 2m / 640mm

**Approx. Age of Tree:** 60yr; life expectancy 30+yrs

**Owner / access:** Shire of Hepburn / unrestricted

**Planning status:** Adjacent to HO 836

**Significance Category:** 2 (7) Contribution to landscape, 2 (8) Historic town

**What is significant:** The Sugar Maple located in Apex Park at Trentham.

**How is it significant:** The Sugar Maple is significant for aesthetic and historic reasons at a local level.

**Why is it significant:** The Sugar Maple is a cool climate, deciduous tree with attractive autumn foliage. The tree was planted by Mrs George Trehwella in 1959 in honour of her work for the Red Cross (the event is recorded in a photograph). The species is not commonly planted elsewhere in the State because it requires good soil with adequate moisture levels and a cool climate. The tree contributes to the population of deciduous trees which are a feature of the town's landscape character. The Trehwella family established a well-known foundry in Trentham in the 1880s.

**Recommendation:** Nominated tree #26 to be added to the Significant Tree Register and Vegetation Protection Overlay to be applied.

**Management:** The tree has a defect of included bark on its lowest south limb and a picnic table is in the target zone. Pruning/removal of the limb is recommended.

**Assessor:** S. Slaytor **Referee:** Trentham and District Historical Society





**Tree No:** 62 (Nominated tree #30)

**Address:** Amelia Lane, Trentham

**PS Map No:** 46VPO

**Lat/longitude:** S37.416306 E144.298779

**Survey Date:** 7 Sept 2011

**Botanical Name:** *Sequoia sempervirens*

**Common Name:** Coast Redwood

**Location:** Northeast of house at edge of forest above lagoon

**No. of trees:** 3

**Height:** 28

**Canopy Spread (m)** E-W: 8 N-S: 8

**Girth:** to 4.25m / 1350mm

**Approx. Age of Tree:** 100yr+

**Vigour / condition:** Good / good; life expectancy 40yr+

**Owner / access:** Private/ restricted

**Planning status:** RCZ – Rural Conservation Zone

**Significance Category:** 2 (1) Context, 2 (7) Contribution to landscape, 8 (1) Historic value

**What is significant:** The three Coast Redwood trees planted at Amelia Lane, Trentham.

**How is it significant:** The trees are significant for historic and aesthetic reasons at a local level.

**Why is it significant:** The trees are important American forestry species that were probably planted when a timber mill operated at the site. The Trehwella family established the mill in the 1800s and Americans were among those employed. The trees are thought to have been planted in the early 20<sup>th</sup> century. Although the site is not visible from the road, the trees contribute to the amenity of the local landscape. The trees are growing near the lagoon on Stoney Creek which was created to provide water for the steam-powered mill. Remains of the old mill and railway are present on site.

**Recommendation:** Nominated trees #30 to be added to the Significant Tree Register and Vegetation Protection Overlay to be applied.

**Management:** Maintain existing conditions within 16 metres of trunk

**Assessor:** S. Slaytor **Referee:** Trentham and District Historical Society



**Tree No:** 63 (Nominated tree # 31)

**Address:** Amelia Lane, Trentham

**PS Map No:** 46VPO

**Lat/longitude:** S37.417695 E144.299562

**Survey Date:** 7 Sept 2011

**Botanical Name:** *Pseudotsuga menziesii*

**Common Name:** Douglas Fir

**Location:** West and south of house along boundary

**No. of trees:** 50+

**Height:** to 30

**Canopy Spread (m)** E-W: to 12 N-S: to 12

**Girth:** to 2.6m / 830mm (others smaller)

**Approx. Age of Tree:** 100yr+

**Vigour / condition:** Good / good; life expectancy 25yrs+

**Owner / access:** Private/ restricted

**Planning status:** RCZ – Rural Conservation Zone

**Significance Category:** 2 (1) Context, 2 (7) Contribution to landscape, 8 (1) Historic value

**What is significant:** The Douglas Firs trees planted at Amelia Lane, Trentham.

**How is it significant:** The trees are significant for historic and aesthetic reasons at a local level.

**Why is it significant:** The trees are important American forestry species that have been planted along the south and west boundaries of the property. This property was originally the site of a timber mill operated by the Trehwella family in the 1800s. Workers included Americans and the trees are thought to have been planted in the early 20<sup>th</sup> century. Although the site is not visible from the road, the trees contribute to the amenity of the local landscape.

**Recommendation:** Nominated trees #31 to be added to the Significant Tree Register and Vegetation Protection Overlay to be applied.

**Management:** Tree growth is suppressed by the proximity of plantings and competition from adjacent Eucalypts. This species would normally be much larger at this age if grown in the open or in a managed forestry plantation. Some smaller trees are anticipated to naturally die out.

**Assessor:** S. Slaytor **Referee:** Trentham and District Historical Society



**Tree No:** 66 (Nominated tree # 37)

**Address:** 33 Park Street, Trentham

**PS Map No:** 38VPO & 39VPO

**Lat/longitude:** S37.393271 E144.318359

**Survey Date:** 29 August 2011

**Botanical Name:** *Sequoiadendron giganteum*

**Common Name:** Sierra Redwood

**Location:** North boundary adjacent to neighbouring carport

**No. of trees:** 1

**Height:** 25

**Canopy Spread (m)** E-W: 14 N-S: 14

**DBH:** ~800mm

**Approx. Age of Tree:** 110yr

**Vigour / condition:** Good / good; life expectancy 30+yrs

**Owner / access:** Private / restricted

**Planning status:** None

**Significance Category:** 2 (7) Contribution to landscape, 8 (1) Historic value, 10 (1) Outstanding

**What is significant:** The mature Sierra Redwood in the garden of 33 Park Street, Trentham.

**How is it significant:** The Redwood is significant for historic and aesthetic reasons at a local level.

**Why is it significant:** The Sierra Redwood is an excellent specimen that is growing among other mature trees in this old established garden. The property was occupied until recently by the Hollis family who were descendents of original settlers in the district.

**Recommendation:** Nominated tree #37 to be added to the Significant Tree Register and Vegetation Protection Overlay to be applied.

**Management:** The tree is located near the neighbouring carport so has potential to be impacted by future works. Avoid damage to tree (roots, trunk, crown) and soil disturbance within 10 metres of the trunk. Other trees on the property are of similar age and significance and should also be assessed for future inclusion.

**Assessor:** S. Slaytor **Referee:** Dr Julian and Cathy Hollis





<b>Tree No:</b>	<b>67 &amp; 68</b> (Nominated trees# 38 & 39)
<b>Address:</b>	Falls Road, Trentham
<b>PS Map No:</b>	38VPO
<b>Lat/longitude:</b>	S37.377055 E144.317297
<b>Survey Date:</b>	21 July 2011
<b>Botanical Name:</b>	Eucalyptus viminalis & Eucalyptus radiata
<b>Common Name:</b>	Manna Gum & Narrow-leaved Peppermint
<b>Location:</b>	Roadside verge on east side of Falls Rd adjacent to golf course
<b>No. of trees:</b>	Stand of 10 – 15 trees
<b>Height:</b>	30m
<b>Canopy Spread (m):</b>	25m
<b>Girth:</b>	to 7.25m (Manna) 9.8m (Peppermint)
<b>Approx. Age of Tree:</b>	150yr
<b>Vigour / condition:</b>	Good / fair-good; life expectancy <5yrs to >30yrs
<b>Owner / access:</b>	Shire of Hepburn / unrestricted
<b>Planning status:</b>	None; a VPO applies to the golf course
<b>Significance Category:</b>	2 (5, 7) Context – Remnant native vegetation & Contribution to landscape, 8 (1) Historic value
<b>What is significant:</b>	The Manna Gum and Narrow-leaved Peppermint trees located in the roadside verge of Falls Road adjacent to the golf course.
<b>How is it significant:</b>	The trees are significant for aesthetic, historic & ecological reasons at a local level.
<b>Why is it significant:</b>	The trees are mature native trees that are similar to the remnant trees within the golf course that were retained in early clearing the forests at Trentham. They provide habitat and contribute to the amenity of the road which is the main entry to the township from Daylesford.
<b>Recommendation:</b>	Nominated tree #38 &39 to be added to the Significant Tree Register and Vegetation Protection Overlay to be applied to this stand of vegetation. Remnant Messmate Stringybark trees also growing in this section of roadside.
<b>Management:</b>	There are structural issues with some trees and these should be assessed to determine their hazard potential so that appropriate action is taken.
<b>Assessor:</b>	S. Slaytor
<b>Referee:</b>	Ina and Graham Bertrand





**Tree No:** 69 (Nominated tree# 19)

**Address:** Horvaths Road, Trentham

**PS Map No:** 38VPO

**Lat/longitude:** S37.22.909 E144.18.224  
(WGS84)

**Survey Date:** 29 August 2011

**Botanical Name:** *Eucalyptus viminalis*

**Common Name:** Manna Gum

**Location:** NW area of property

**No. of trees:** 1

**Height:** 35

**Canopy Spread (m)** E-W: 29 N-S: 16

**Girth / DBH:** 5m / 1590mm

**Approx. Age of Tree:** 300yr

**Vigour / condition:** Fair / fair

**Owner / access:** Private / restricted

**Planning status:** None

**Significance Category:** 2 (5) Remnant native vegetation, 4 (1) Particularly old, 8 (1) Historic value

**What is significant:** The large remnant Manna Gum retained in what was formerly the Wombat State Forest.

**How is it significant:** The Manna Gum is significant for aesthetic, historic and scientific reasons at a local level.

**Why is it significant:** The tree is scientifically significant as an old remnant tree and enhances the ecological values of the local vegetation. The tree is particularly large and indicates the size of forest trees prior to forest clearing. This tree survived the 1945 bushfire.

**Recommendation:** Nominated tree #19 to be added to the Significant Tree Register and Vegetation Protection Overlay to be applied.

**Management:** The tree is growing in an isolated forest environment where the main risk is from fire. Prior to commencing a prescribed hazard reduction burn the area below this tree should have fuel loadings removed to prevent fire burning out the tree's trunk.

**Assessor:** S. Slaytor

**Referee:** Cath & William Pye



**Tree No:** 70 (Nominated tree# 71)  
**Address:** Creswick-Newstead Road, Allendale  
**Lat/longitude:** Indicated below images of trees  
**Survey Date:** 14 May 2015  
**Botanical Name:** *Quercus robur*  
**Common Name:** English Oak  
**Location:** 4106-4112 Creswick-Newstead Road  
 4112 Creswick-Newstead Road



S37.369747 E143.921917

**No. of trees:** 2  
**Height:** 15  
**Canopy Spread (m) :** 15  
**Girth:** 2.7 – 2.9 metres  
**Approx. Age of Tree:** 100yrs+  
**Vigour / condition:** Good / good; life expectancy 40yrs+  
**Owner / access:** Shire of Hepburn / unrestricted (street)  
**Planning status:** None  
**Significance Category:** 2 (7) Context-contribution to landscape, 6 (1) Aesthetic value, 8 (1) Historic



S37.370528 E143.921737

**What is significant:** The two Oak trees among a roadside planting of English Elm *Ulmus procera* and White Poplar *Populus alba* between Creswick-Smeaton Road and Leishman Street.

**How is it significant:** The Oaks are significant for historic, scientific and aesthetic reasons at a local level.

**Why is it significant:** The trees are old and were probably planted to commemorate Federation. The small township of Allendale is surrounded by open grazing land and the deciduous trees are a feature of the town.

**Recommendation:** Nominated trees No. 70 are to be included in the Significant Tree Register and listed on the Heritage Overlay.

**Management:** Trees are growing in relatively undisturbed areas within wide roadside verge. Avoid future disturbance within the tree protection zone (12 x stem diameter measured at 1.4mH above ground level).

**Assessor:** S. Luke **Referee:** Mandy Jean

<b>Tree No:</b>	<b>70</b>	(Nominated tree# 71)
<b>Address:</b>	Creswick-Newstead Road, Allendale	
<b>Lat/longitude:</b>	<i>Indicated below images of trees</i>	
<b>Survey Date:</b>	14 May 2015	
<b>Botanical Name:</b>	Quercus robur	
<b>Common Name:</b>	English Oak	
<b>Location:</b>	4106-4112 Creswick-Newstead Road 4112 Creswick-Newstead Road	
<b>No. of trees:</b>	2	
<b>Height:</b>	15	
<b>Canopy Spread (m) :</b>	15	
<b>Girth:</b>	2.7 – 2.9 metres	
<b>Approx. Age of Tree:</b>	100yrs+	
<b>Vigour / condition:</b>	Good / good; life expectancy 40yrs+	
<b>Owner / access:</b>	Shire of Hepburn / unrestricted (street)	
<b>Planning status:</b>	None	
<b>Significance Category:</b>	2 (7) Context-contribution to landscape, 6 (1) Aesthetic value, 8 (1) Historic	
<b>What is significant:</b>	The two Oak trees among a roadside planting of English Elm <i>Ulmus procera</i> and White Poplar <i>Populus alba</i> between Creswick-Smeaton Road and Leishman Street.	
<b>How is it significant:</b>	The Oaks are significant for historic, scientific and aesthetic reasons at a local level.	
<b>Why is it significant:</b>	The trees are old and were probably planted to commemorate Federation. The small township of Allendale is surrounded by open grazing land and the deciduous trees are a feature of the town.	
<b>Recommendation:</b>	Nominated trees 70 were incorrectly plotted on the exhibited planning scheme map. To be considered in a future planning scheme amendment.	
<b>Management:</b>	Trees are growing in relatively undisturbed areas within wide roadside verge. Avoid future disturbance within the tree protection zone (12 x stem diameter measured at 1.4mH above ground level).	
<b>Assessor:</b>	S. Luke	<b>Referee:</b> Mandy Jean



S37.369747 E143.921917



S37.370528 E143.921737

**This page is intentionally blank**