

MASTERPLAN VISION

The Doug Lindsay Recreation Reserve Masterplan (the Masterplan) aims to increase the use and enjoyment of the Reserve by a range of users and ensure appropriate infrastructure is provided that supports a healthy, active, engaged and safe community. This Masterplan builds on the 2018 Masterplan.

Implementation of the Masterplan will achieve the following objectives (which are generally in accordance with the 2018 Masterplan).

- Enhance the capacity of the Doug Lindsay Recreation Reserve (Reserve) to be used for active, structured and unstructured sports and improve the quality of the sports infrastructure.
- Enhance the role of the community, improve the user experience and safety in the Reserve by promoting higher levels of use and surveillance.
- Explore and support a diverse range of public open space experiences through other community or sporting uses of the Reserve.
- Provide passive recreation opportunities at the Reserve including walking, cycling, running, playing, picnicking and nature-based recreation opportunities by providing better linkages to and through the Reserve via a path network.
- Improve and control vehicle movement and car parking.
- Improve the appearance, shade and biodiversity values by tree and other vegetation planting along the creek and throughout the Reserve.



CONTENTS

- PLA283-L11 Overall Masterplan
- PLA283-L12 Masterplan - North West
- PLA283-L13 Masterplan - North East
- PLA283-L14 Masterplan - South West
- PLA283-L15 Masterplan - South East
- PLA283-L16 Masterplan Enlargement - Entry
- PLA283-L17 Masterplan Enlargement - Central

Protection of remnant vegetation and revegetation of creek corridor to improve habitat and biodiversity.

Path network linking external footpath network to Reserve facilities and including park infrastructure such as seating and drinking fountains.

Possible future Potable water reduction project including drainage improvements, stormwater storage and re-use for irrigation.

Parkland entry off Elizabeth Road with paths, seating, tree planting and signage.

Future facility / overflow carparking (approx 120 spaces).

Main Circuit Path (approx 1.5km).

Soccer facility improvements including clubrooms, drainage, irrigation and fencing.

Future facility / overflow carparking (approx 85 spaces).

Carparking improvements (approx 100 spaces) including paths and drainage upgrades and tree planting.

Upgraded existing soccer / netball clubrooms to improve facilities and expand sheltered viewing areas.

Stage 1 carpark and access improvements (approx 85 spaces) with upgrades to main Reserve entry (Victoria St).

Playspace, picnic and BBQ areas near public toilets and overlooking soccer pitches including shelters and trees.

Facility refurbishment and extension including public toilets. Develop terracing, seating and access to soccer pitches.

Access and carparking improvements (approx 120 spaces).

Relocated cricket nets.

Access and carparking improvements (approx 70 spaces) including drop-off zone and one-way access from oval.

Oval drainage and surface improvements including replacement of subsurface network and perimeter drainage and outfall.

Possible future second bowling green.

Tree planting for shade and canopy coverage (approx 40%).

Review Lionel Street vehicle access arrangements including possible "no through road" and footpath.

New Bald Hills Road entry and access.

P1	Preliminary Issue for HSC Review	RH	28.11.19
Revision	Description	Initials	Date
PRELIMINARY ISSUE			
Status			

Notes

1. The drawings is conceptual only. It should not be used as a construction drawing.
2. This plan is based on the Plan of Features and Levels (TGM Group) provided by Hepburn Shire Council and the Functional Concept Plan (PLA283-L10 revision P2).
3. Services are not shown. The location of all services shall be verified prior to any works being undertaken on site.

Legend

- Main (Vehicle) Reserve Entry / Exit
- Reserve (Pedestrian) Entry
- Parkland / Grass Area
- Carpark Area
- Play Area
- Picnic Area
- New Sports Facility
- Deciduous & Evergreen Tree Planting
- Indigenous Vegetation / Revegetation
- Main Circuit Path (2.5m wide)
- Path Network
- External Path Connections



DRAFT FOR CLIENT REVIEW ONLY

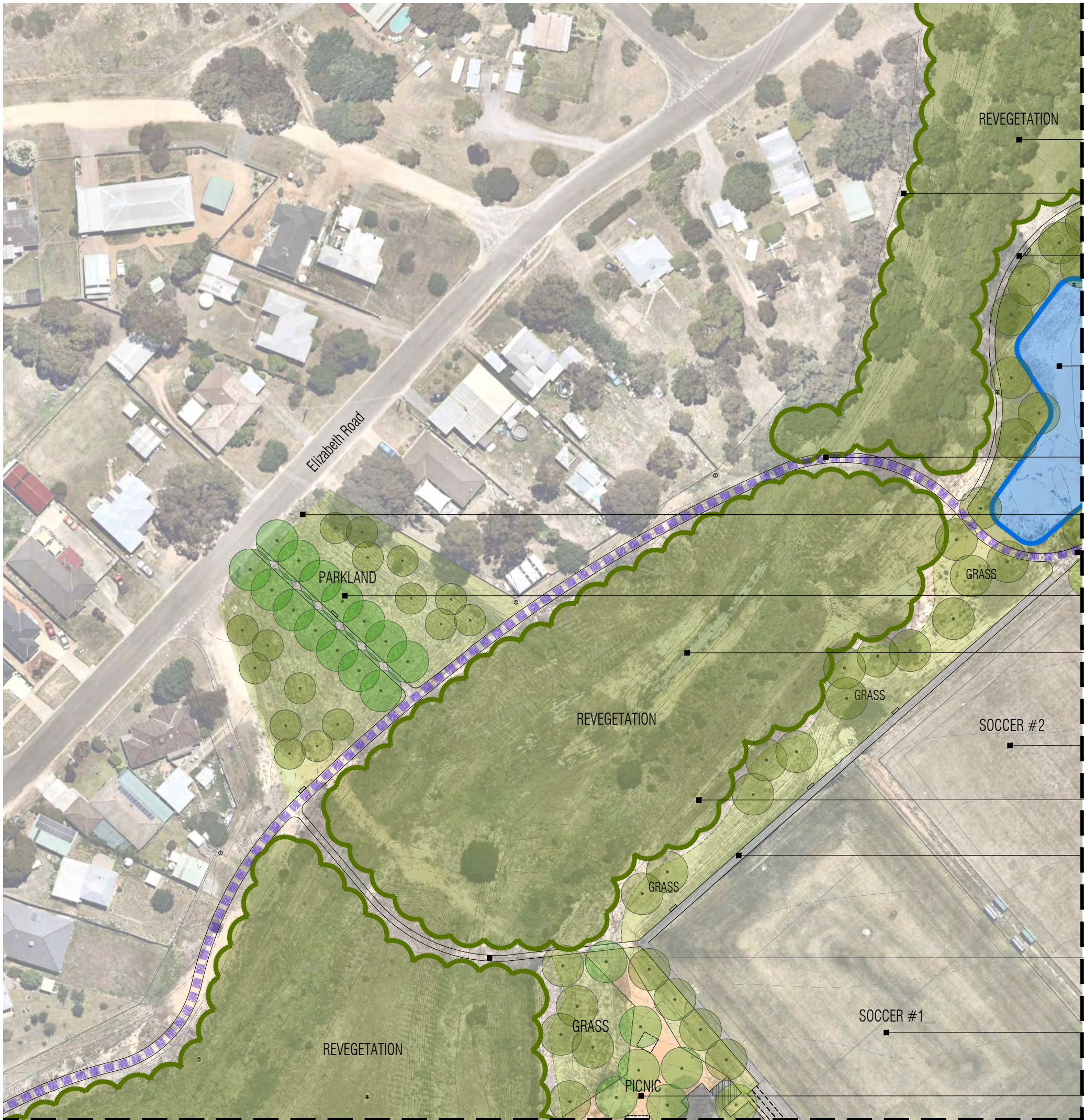
Client / Project
Hepburn Shire Council
Masterplan
Doug Lindsay Recreation Reserve, Creswick

Drawing Title
Overall Masterplan

Drawn	Approved	Date	North
RH	AD	28.11.2019	
Scale (A1)	Scale (A3)	Sheet	
nts	nts	1 of 7	

Drawing Number
PLA283-L11

Revision
P1



Map and protect remnant and planted vegetation. Revegetate creek corridor, riparian and terrestrial areas using indigenous species to provide habitat and increase biodiversity values.

Provide and maintain mowed firebreak along all adjoining fences / boundaries.

Provide a network of paths throughout the Reserve linking residential areas, sports facilities and passive recreation opportunities. Paths supported by park infrastructure such as seating and drinking fountains.

Possible future stormwater storage (approx 3.5ML) for re-use (irrigation) as part of a potable water replacement strategy to reduce costs and environmental impacts.

Provide access across creek and reduce impact on riparian and creek habitats by constructing low boardwalk or bridge crossing (subject to flood study, levels and CMA consultation).

Explore construction of footpaths along Elizabeth Street to provide access to Reserve.

Construct main path circuit (2.5m wide). Total length approx 1.5km.

Develop entry and parkland off Elizabeth Road with paths, seating, tree planting, signage and "park-style" fences to restrict vehicle access.

Investigate sediment pond, wetland plantings or other water-sensitive-urban-design infrastructure to improve water quality and "out-flows" from the Reserve.

Upgrade soccer pitch #2 including drainage improvements, irrigation and chain-mesh fencing. Explore expanding second pitch to full-sized.

Remove higher mounds to provide views across creek towards Elizabeth Road and provide tree planting for shade and wind break, paths and seating.

Construct path (and surface drainage) with low grassed batters along north and west boundary with seating overlooking soccer pitches and trees for shade.

Provide access across creek by constructing a low-crossing or boardwalk with possible future bridge crossing - location and height subject to flood study, levels and CMA consultation.

Upgrade soccer pitch #1 including drainage improvements.

Construct playspace, picnic and BBQ areas including seats, drinking fountains and shelters and carpark overlooking soccer pitches. Plant trees for shade.

Notes

1. The drawings is conceptual only. It should not be used as a construction drawing.
2. This plan is based on the *Plan of Features and Levels* (TGM Group) provided by Hepburn Shire Council and the *Functional Concept Plan* (PLA283-L10 revision P2).
3. Services are not shown. The location of all services shall be verified prior to any works being undertaken on site.

Legend

- Parkland / Grass Area
- Carpark Area
- Picnic Area
- Possible Future Water Storage
- Deciduous & Evergreen Tree Planting
- Indigenous Vegetation / Revegetation
- Main Circuit Path (2.5m wide)
- Path Network
- Concrete / Asphalt Path



DRAFT FOR CLIENT REVIEW ONLY

Client / Project
 Hepburn Shire Council
 Masterplan
 Doug Lindsay Recreation Reserve, Creswick

Drawing Title			
Masterplan - North West			
Drawn	Approved	Date	North
RH	AD	28.11.2019	
Scale (A1)	Scale (A3)	Sheet	
1:500	1:1000	2 of 7	
This drawing and design is protected by copyright © PLOT Landscape Architects			
Drawing Number	Revision		
PLA283-L12	P1		



Map and protect remnant and planted vegetation. Revegetate creek corridor, riparian and terrestrial areas using indigenous species to provide habitat and increase biodiversity values.

Provide a network of paths throughout the Reserve linking residential areas, sports facilities and passive recreation opportunities. Paths supported by park infrastructure such as seating, drinking fountains and signage.

Possible future stormwater storage (approx 3.5ML) for re-use (irrigation) as part of a potable water replacement strategy to reduce costs and environmental impacts.

No vehicle access from Anne Street road reserve. Construct "park-style" fencing where necessary to restrict vehicle access into Reserve.

Level 0.32Ha grassed area for future facility / overflow carparking (approx 120 spaces).

Construct carparking (approx 100 spaces) along netball courts and soccer pitches including paths and drainage upgrades and trees for shade.

Upgrade soccer pitch #2 including drainage improvements, irrigation and chain-mesh fencing. Explore expanding second pitch to full-sized. Convert pitches to warm-season grass to lower irrigation demands.

Level 0.26Ha grassed (reinforced) area for future facility / overflow carparking (approx 85 spaces) with safe pedestrian access and trees for shade.

Construct main path circuit (2.5m wide) with limited road crossings (and pedestrian priority) and trees for shade. Total length approx 1.5km.

Design and develop grassed parkland at entry with path access and trees for shade.

Upgrade existing soccer / netball clubrooms to improve facilities and expand sheltered viewing areas.

Notes
 1. The drawings is conceptual only. It should not be used as a construction drawing.
 2. This plan is based on the *Plan of Features and Levels* (TGM Group) provided by Hepburn Shire Council and the *Functional Concept Plan* (PLA283-L10 revision P2).
 3. Services are not shown. The location of all services shall be verified prior to any works being undertaken on site.

Legend

- Parkland / Grass Area
- Carpark Area
- Picnic Area
- Possible Future Water Storage
- Deciduous & Evergreen Tree Planting
- Indigenous Vegetation / Revegetation
- Main Circuit Path (2.5m wide)
- Path Network
- Concrete / Asphalt Path



DRAFT FOR CLIENT REVIEW ONLY

Client / Project
 Hepburn Shire Council
 Masterplan
 Doug Lindsay Recreation Reserve, Creswick

Masterplan - North East

Drawn	Approved	Date	North
RH	AD	28.11.2019	
Scale (A1)	Scale (A3)	Sheet	
1:500	1:1000	3 of 7	

This drawing and design is protected by copyright © PLOT Landscape Architects

Drawing Number **PLA283-L13** Revision **P1**



- Construct terraces and "bus" shelters for seating and viewing over soccer pitch.
- Construct carpark (approx 27 spaces) providing access to playspace, picnic and BBQ areas and overlooking soccer.
- Construct playspace, picnic and BBQ areas with access to public toilets including seating and shelters.
- Construct terraces (flat grass / paved areas) to support a variety of uses of building includes seating, picnic / BBQ and access to pitches and play areas.
- Provide access across creek by constructing a bridge crossing or boardwalk - exact location and height subject to flood study levels and CMA consultation.
- Refurbish and extend Multipurpose Facility / Clubrooms to cater for female participation, soccer change-rooms and public toilets.
- Oval drainage and surface improvements including replacement of subsurface network and perimeter drainage and outfall and external surface drainage.
- Construct carpark (approx 45 spaces) with drop-off area, improved pedestrian access to Bowling Club and trees for shade.
- Possible relocated cricket nets with retaining walls and safety fencing.
- Possible future, second bowling green with maintenance vehicle access to existing sheds.
- Cassels Lane entry including signs, "park-style" fencing to exclude vehicles and path connections.
- Where possible retain existing planted, native vegetation.
- Provide and maintain mowed firebreak along all adjoining fences / boundaries.
- Construct concrete path around oval perimeter for access and to make up levels for surface and subsurface drainage.
- Develop one-way vehicle access from oval to Bowling Club / carpark area. Allow for closure for operational reasons.
- Construct main path circuit (2.5m wide) with limited road crossings (and pedestrian priority) and trees for shade. Total length approx 1.5km.
- Map and protect remnant and planted vegetation. Revegetate creek corridor, riparian and terrestrial areas using indigenous species to provide habitat and increase biodiversity values.
- Construct path connection to main circuit path and investigate footpath connections to Creswick street footpath network.
- Construct new intersection, entry and access off Bald Hills Road directly to Bowling Club, carpark, picnic / BBQ areas and playspace including signage and "park-style" fencing.

P1	Preliminary Issue for HSC Review	RH	28.11.19
Revision	Description	Initials	Date
PRELIMINARY ISSUE			

Notes

1. The drawings is conceptual only. It should not be used as a construction drawing.
2. This plan is based on the *Plan of Features and Levels* (TGM Group) provided by Hepburn Shire Council and the *Functional Concept Plan* (PLA283-L10 revision P2).
3. Services are not shown. The location of all services shall be verified prior to any works being undertaken on site.

Legend

	Parkland / Grass Area
	Carpark Area
	Play Area
	Picnic / BBQ Area
	New Sports Facility
	Deciduous & Evergreen Tree Planting
	Indigenous Vegetation / Revegetation
	Main Circuit Path (2.5m wide)
	Path Network
	Concrete / Asphalt Path
	External Path Connections



DRAFT FOR CLIENT REVIEW ONLY

Client / Project
 Hepburn Shire Council
 Masterplan
 Doug Lindsay Recreation Reserve, Creswick

Masterplan - South West

Drawn	Approved	Date	North
RH	AD	28.11.2019	
Scale (A1)	Scale (A3)	Sheet	
1:500	1:1000	4 of 7	

This drawing and design is protected by copyright © PLOT Landscape Architects.
 Drawing Number: **PLA283-L14** Revision: **P1**



Reserve entry improvements including signage, vehicle access and safety improvements and carparking.

Stage 1 carpark and access improvements (approx 85 spaces) including paths, signage, trees for shade and a review of security and lighting.

Reserve entry improvements including central median, pedestrians paths and footpath connections, signage, lighting, relocation of the ticket box, vehicle access and safety improvements and trees for shade.

Upgrade and relocate (if necessary) scoreboard.

Design and develop grassed parkland at entry with path access, seating and trees (deciduous and evergreen) for shade. Explore opportunities for other facilities (commensurate with a district / regional open space) including teen / tween play and multi-purpose court.

Review Lionel Street vehicle access arrangements including possible "no through road", "park-style" fencing to define Reserve boundary and footpath.

Oval drainage and surface improvements including replacement of subsurface network and perimeter drainage and outfall.

Construct perpendicular carpark around perimeter of oval (approx 130 spaces subject to detailed design and engineering) including earthworks and retaining walls, trees for shade and kerbing for surface drainage and protection of oval.

Construct main path circuit (2.5m wide) with limited road crossings (and pedestrian priority) and trees for shade. Total length approx 1.5km.

Construct path connections / footpaths and investigate connections to Creswick street footpath network including to health, education, retail and public transport services.

Construct "mini" roundabout to allow vehicles to turn around with one-way access to Bowling Club / carpark.

Vegetate areas using indigenous species to provide habitat and increase biodiversity values. Where possible retain existing planted, native vegetation. Provide and maintain mowed firebreaks along all adjoining fences / boundaries.

Notes

1. The drawings is conceptual only. It should not be used as a construction drawing.
2. This plan is based on the *Plan of Features and Levels* (TGM Group) provided by Hepburn Shire Council and the *Functional Concept Plan* (PLA283-L10 revision P2).
3. Services are not shown. The location of all services shall be verified prior to any works being undertaken on site.

Legend

- Parkland / Grass Area
- Carpark Area
- Deciduous & Evergreen Tree Planting
- Indigenous Vegetation / Revegetation
- Main Circuit Path (2.5m wide)
- Path Network
- Concrete / Asphalt Path
- External Path Connections



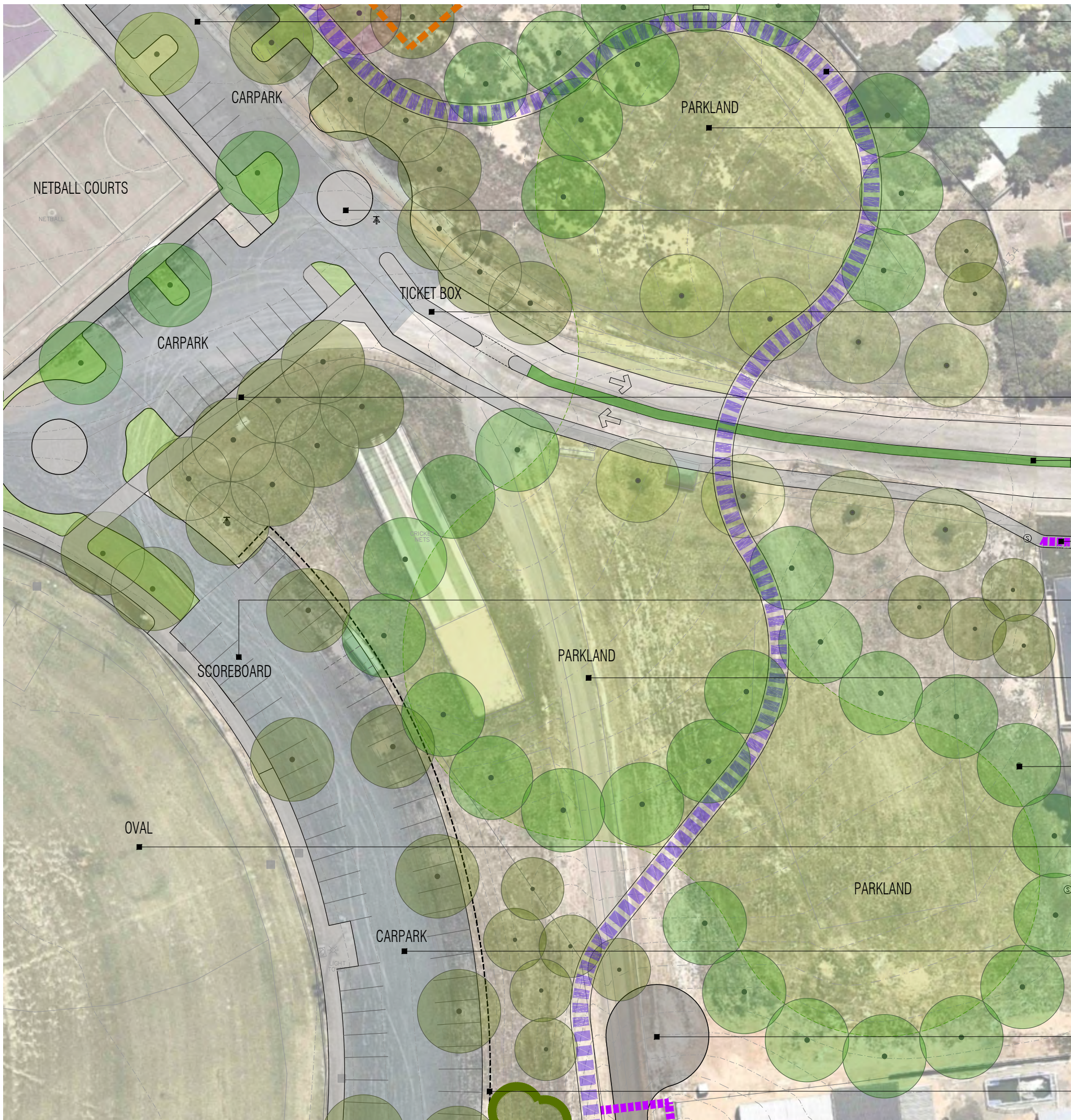
DRAFT FOR CLIENT REVIEW ONLY

Client / Project
 Hepburn Shire Council
 Masterplan
 Doug Lindsay Recreation Reserve, Creswick

Drawing Title
Masterplan - South East

Drawn RH	Approved AD	Date 28.11.2019	North
Scale (A1) 1:500	Scale (A3) 1:1000	Sheet 5 of 7	

Drawing Number
PLA283-L15
 Revision
P1



Drainage and pavement upgrades, signage and definition of carparking along netball courts / soccer pitch.

Construct main path circuit (2.5m wide) with limited road crossings (and ped. priority), seating, signage (distance markers) and trees for shade. Total length approx 1.5km.

Design and develop grassed parkland at entry with path access, seating and trees (deciduous and evergreen) for shade.

Stage 1 carpark and access improvements including clear vehicle access and priority, intersections, signage, separated vehicle and pedestrian traffic and delineated carparks (approx 85 spaces).

Reserve entry improvements including relocation of ticket box to an enlarged median in the centre of the road.

Stage 1 carpark and access improvements including network of pedestrian paths (with priority over vehicles) providing access from surrounding footpath network to Reserve facilities.

Reserve entry improvements including central planted median, signage and lighting.

Reserve entry improvements including pedestrian path access to Reserve facilities, signage and footpath connections.

Possible location for upgraded (electronic) scoreboard.

Design and develop grassed parkland at entry with path access, seating and trees (deciduous and evergreen) for shade. Explore opportunities for other facilities (commensurate with a district / regional open space) including teen / tween play, multi-purpose court, exercise stations or other unstructured recreation opportunities.

Extensive and diverse tree planting (deciduous and evergreen) for shade, habitat, carbon capture and mitigation against the impacts of climate change. Develop Landscape / Planting Plan for entire Reserve.

Oval drainage and surface improvements including replacement of subsurface network, perimeter drainage and outfall replacement as well as external surface drainage capture (as part of the carpark works) prior to "spilling" onto edge of the oval.

Construct perpendicular carpark around perimeter of oval (approx 130 spaces subject to detailed design and engineering) including earthworks and retaining walls, trees for shade and kerbing for surface drainage and protection of oval. Carparks shown 2.8m wide x 5.5m long (with allowance for overhang).

Review Lionel Street vehicle access arrangements including possible "no through road" and footpath connection to Bald Hills Road.

Possible retaining wall (max 0.9m high) set back min 1m from end of carparks.

Notes
 1. The drawings is conceptual only. It should not be used as a construction drawing.
 2. This plan is based on the *Plan of Features and Levels* (TGM Group) provided by Hepburn Shire Council and the *Functional Concept Plan* (PLA283-L10 revision P2).
 3. Services are not shown. The location of all services shall be verified prior to any works being undertaken on site.

Legend

- Tree Planting - Native (indicative)
- Tree Planting - Exotic (indicative)
- Parkland / Grass Area
- Carpark Area
- Indigenous Vegetation / Revegetation
- Main Circuit Path (2.5m wide)
- Path Network
- Concrete / Asphalt Path
- External Path Connections



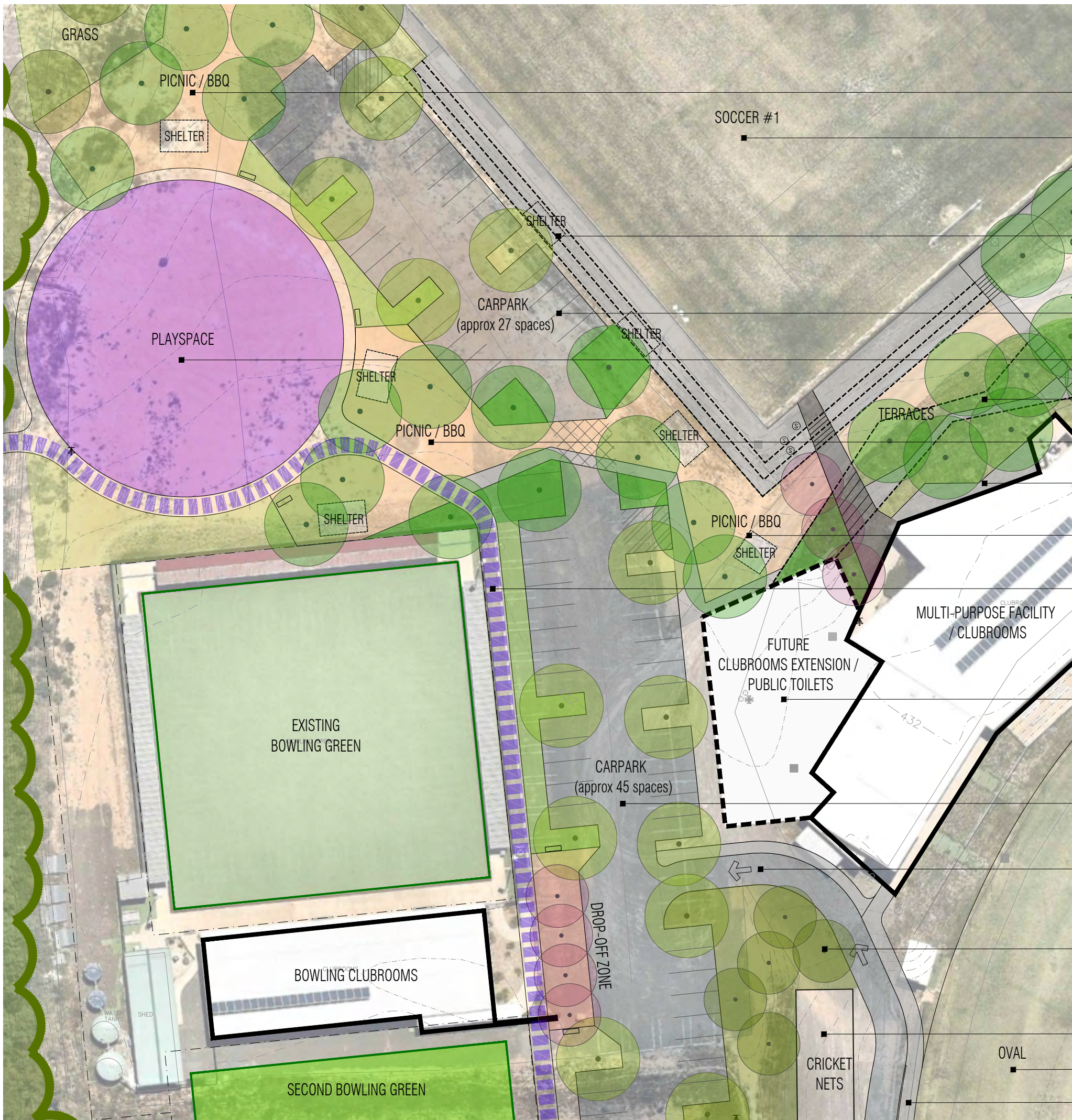
DRAFT FOR CLIENT REVIEW ONLY

Client / Project
 Hepburn Shire Council
 Masterplan
 Doug Lindsay Recreation Reserve, Creswick

Masterplan Enlargement - Entry

Drawn	Approved	Date	North
RH	AD	28.11.2019	
Scale (A1)	Scale (A3)	Sheet	
1:250	1:500	6 of 7	

This drawing and design is protected by copyright © PLOT Landscape Architects.
 Drawing Number **PLA283-L16** Revision **P1**



Construct picnic and BBQ areas (compacted gravel surface) including seats, drinking fountains, shelters and trees for shade.

Upgrades to soccer pitches.

Construct terraces (such as concrete seating walls and paving) and "bus" shelters for covered, all-weather seating and viewing over soccer pitch. Concrete path / surface drainage around pitch.

Construct carpark (approx 27 spaces) providing access to playspace, picnic and BBQ areas and overlooking soccer with shared zone where pedestrians cross road.

Construct playspace, picnic and BBQ areas with access to public toilets including seating and shelters.

Construct flat grass and paved terraces to support a variety of uses of the building, shade, seating and access to pitches.

Construct picnic and BBQ areas (gravel surface) including seats, picnic tables, drinking fountains, shelters and trees.

Construct level, paved and grass terraces to support diverse use of building.

Construct picnic and BBQ areas (gravel surface) including seats, drinking fountains, shelters, trees for shade with direct access to public toilets.

Construct main path circuit (2.5m wide) with limited road crossings (and pedestrian priority), seating, signage (distance markers) and trees. Total length approx 1.5km.

Refurbish and extend Multipurpose Facility / Clubrooms to cater for female participation, soccer change-rooms and public toilets.

Construct carpark (approx 45 spaces shown as 2.8m wide x 6m long), drop-off zone, accessible spaces and improved pedestrian access to Bowling Club.

Develop one-way vehicle access from oval to Bowling Club. Allow for closure for operational reasons.

Extensive and diverse tree planting (deciduous and evergreen) for shade, habitat, canopy coverage and mitigation against the impacts of climate change. Develop Landscape / Planting Plan for entire Reserve.

Possible relocated cricket nets with retaining walls and safety fencing.

Oval drainage and surface improvements.

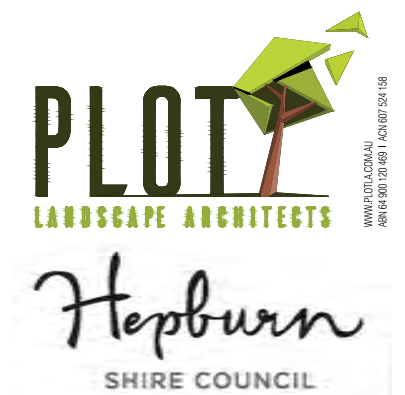
Construct concrete path around oval perimeter for access and to make up levels for surface and subsurface drainage.

Notes

1. The drawings is conceptual only. It should not be used as a construction drawing.
2. This plan is based on the *Plan of Features and Levels* (TGM Group) provided by Hepburn Shire Council and the *Functional Concept Plan* (PLA283-L10 revision P2).
3. Services are not shown. The location of all services shall be verified prior to any works being undertaken on site.

Legend

- Tree Planting - Native (indicative)
- Tree Planting - Exotic (indicative)
- Parkland / Grass Area
- Picnic / BBQ Area
- Carpark Area
- Indigenous Vegetation / Revegetation
- Main Circuit Path (2.5m wide)
- Path Network
- Concrete / Asphalt Path



DRAFT FOR CLIENT REVIEW ONLY

Client / Project
 Hepburn Shire Council
 Masterplan
 Doug Lindsay Recreation Reserve, Creswick

Drawing Title
Masterplan Enlargement - Central

Drawn RH	Approved AD	Date 28.11.2019	North
Scale (A1) 1:250	Scale (A3) 1:500	Sheet 7 of 7	

This drawing and design is protected by copyright © PLOT Landscape Architects.
 Drawing Number **PLA283-L17** Revision **P1**