

Important information

- Clear access is required to your nature strip. Avoid parking cars in front of your property.
- Place items out on Saturday 6 and Sunday 7 ready for collection from Monday 8 September.
- Place items in four piles:
 - E-waste – including fridges (doors removed) and white goods (domestic)
 - Scrap metal items
 - Non-recyclable waste
 - Green waste.
- Present materials correctly:
 - Only accepted items
 - Place in maximum of four piles, maximum 2 cubic metres of waste
 - Green waste must be able to be lifted by one person AND no longer than 1.5 m in length and 20 kg
 - Hard waste items must be able to be lifted shoulder high by two people AND no longer than 1.5 m or 40 kg.
- Any incorrect items placed out will be issued with a notice and must be removed from the kerbside.
- Don't put your waste out too early.
- Items may be collected by multiple vehicles.
- Items collected are recycled where possible.

03 5348 2306

PO Box 21 Daylesford 3460

shire@hepburn.vic.gov.au

www.hepburn.vic.gov.au

Hepburn
SHIRE COUNCIL

CLUNES

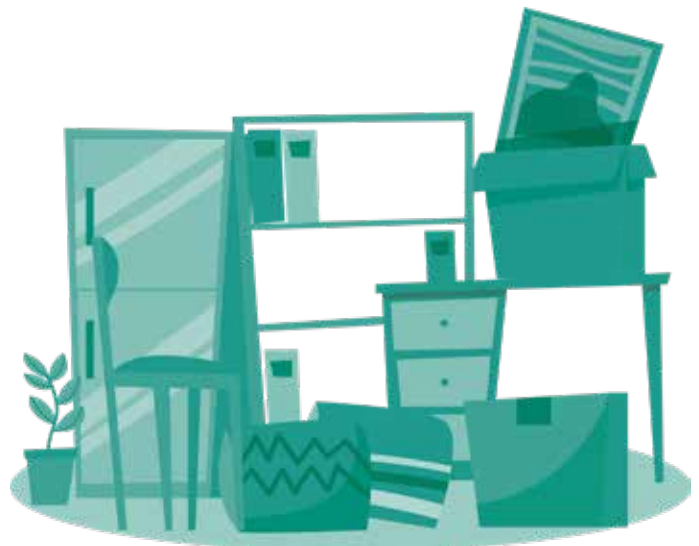
HARD/ GREEN WASTE COLLECTION 2025



**ITEMS MUST BE PLACED OUT BEFORE
MONDAY 8 SEPTEMBER 2025**



**DO NOT PLACE ITEMS OUT BEFORE
SATURDAY 6 SEPTEMBER 2025**



PLEASE READ CAREFULLY. SOME RESTRICTIONS APPLY DUE TO HEALTH AND SAFETY REQUIREMENTS.



What is accepted?

Only place items in piles of the following materials separated:



Metal

- White goods and household appliances (remove fridge doors)
- Small car parts, lawn mowers and tools
- Hot water systems, baths
- Scrap metal - waste metal including tin and scrap iron



Green Waste

PRUNINGS AND BRANCHES

- Up to 2 cubic metres of green waste
- Tied firmly and neatly in bundles (with strong string or twine (no wire))
- Maximum 1.5 metres in length, 150 mm and 20 kg
- Vines, rose cuttings, weeds and diseased garden waste to be placed with HARD WASTE for collection



Hard Waste

- Up to 2 cubic metres of hard waste
- Household furniture
- Mattresses - bed bases
- Timber, no longer than 1.5 m in length
- Mirrors/windows must be securely wrapped in cardboard with the wording 'Glass' clearly marked
- Vines, rose cuttings, weeds and diseased garden waste



E-waste

- E-waste is any item that contains batteries or has a plug

A maximum total of 2 cubic metres of waste will be collected.



What we will not collect

- Tyres and hazardous waste
- Waste from industrial premises
- Materials from renovations, building sites and/or fencing, including fencing wire
- Car bodies or large parts
- Recyclables e.g. bottles, paper
- Rubble, concrete, bricks, soil
- Household refuse
- Clothing
- Asbestos and cement sheeting
- Chemicals, paints, fertilisers and other liquid waste
- Motor oil
- Gas bottles
- Batteries (including car batteries)
- Untied bundles of prunings or bundles tied with wire, rope or plastics
- Noxious weeds and vines - place with hard waste
- More than 2 cubic metres of green waste

Are your household items still usable?

Join the circular economy! Reusing household goods keeps them out of landfill. Before you put items out, consider these reuse alternatives:

- Check if friends or relatives want them
- Sell or give away items online
- Have a garage sale
- Donate items that are still in good condition* to a charity or your local transfer station resource recovery shop.

*Both are at discretion of individual organisation and staff.